



AWARD-WINNING
CAD/CAM SOFTWARE
FOR PACKAGING

EngView Library of
Resizable Designs

Corrugated LIBRARY INDEX

EngView Package Designer Suite

EngView Library of
Resizable Designs

Corrugated LIBRARY INDEX

EngView Package Designer Suite

This book is designed by EngView Systems Corp.

© EngView Systems Corp. a SIRMA Group Company. All rights reserved.

EngView Package Designer Suite, EngView Package Designer Lite, EngView Package Designer Art, EngView Package Designer Standard, EngView Package Designer Professional, EngView Package Designer Ultimate, EngView Package Designer&Samplemaker, EngView Package Designer&Diemaker, EngView Project Organizer and EngView Synergy are trademarks of EngView Systems Corp.

All product names cited are trade names or trademarks of their respective owners.

EngView Systems Sofia JSC

135 Tzarigradsko Shosse Blvd., 5th Floor
1784 Sofia, Bulgaria
Tel: +359-2-9768-312
Fax: +359-2-9768 314
e-mail: info@engview.com

EngView Systems Corp.

5890 Monkland Ave., Suite 203,
Montreal, Qc
Canada H4A 1G2
Tel: +1-514-343-0290
Fax: +1-514-343 0143
e-mail: info@engview.com

EngView Latin America Ltda.

Rua Joao Azevedo Marques, 215 sl.13
09750-030 Sao Bernardo do Campo
SP, Brazil
Tel: +55-11-2564-7325
e-mail: evla@engview.com

All EngView Products are designed for Microsoft Windows 7, Windows Vista, XP, 2000

Minimum Configuration: Intel Pentium 1GHz, 512MB RAM / 5.0 GB HDD / 1024 x 768 Display

INSTRUCTIONS

This book contains the index information about all package standards, included in the EngView Library of Resizable Designs. Its main purpose is to assist the users of EngView Package Designer Suite in their search for appropriate standards and design types.

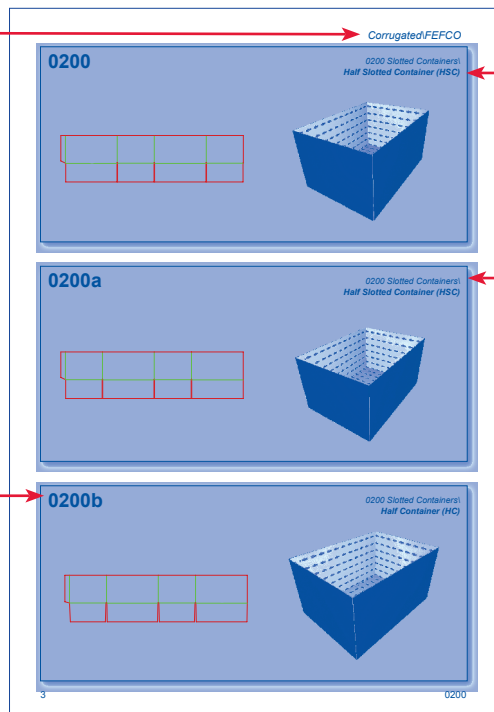
It consists of four parts, related to the four main libraries of packaging standards – EngView Folding Carton Library, ECMA Folding Carton Library, EngView Corrugated Library and FEFCO Corrugated Library.

Each library is divided into several groups and sub-groups of designs depending on the specific types of designs included.

The structure of the book index is exactly the same as the structure of the file folders and directories in the Library of Resizable Designs and the Library Help System.

This is an example layout of an index page:

The general classification and group of the design



The name of the resizable design

The path to find the corresponding design in the EngView Library File System

The index number of the design

How to find additional information in the EngView Library Index Help System?

Each design is described in detail in the EngView Library Index Help System. Follow the same path as in the Index Book or the File System to reach the detailed description of the design.

Corrugated - FEFCO

- 0200 Slotted Containers**
- 0300 Telescope-type Boxes**
- 0400 Folders-type Boxes&Trays**
- 0500 Slide-type Boxes**
- 0600 Rigid-type Boxes**
- 0700 Self-erecting Boxes&Trays**
- 0900 Interior Forms**

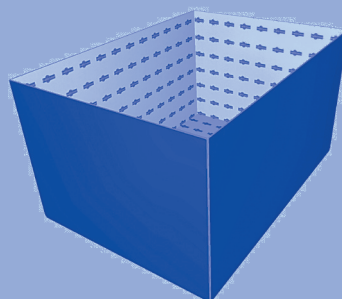
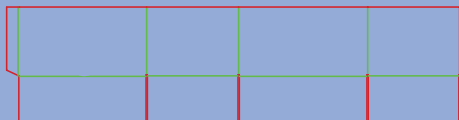
FEFCO Corrugated Library

Corrugated - FEFCO

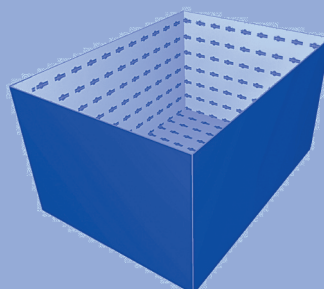


0200

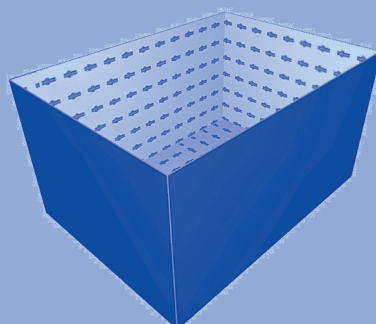
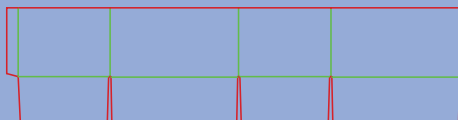
0200 Slotted Containers\
Half Slotted Container (HSC)

**0200a**

0200 Slotted Containers\
Half Slotted Container (HSC)

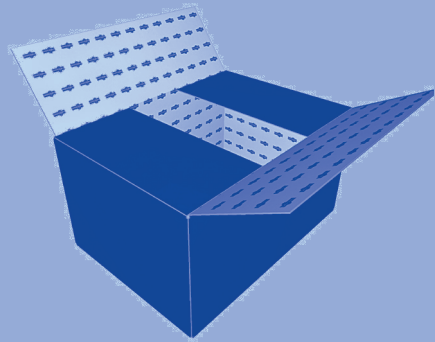
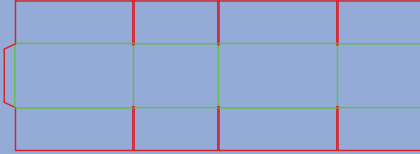
**0200b**

0200 Slotted Containers\
Half Container (HC)



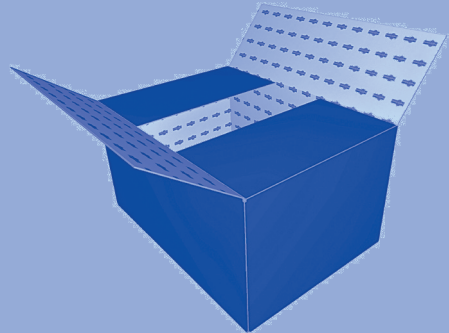
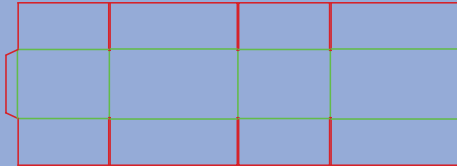
0201

0200 Slotted Containers\
Regular Slotted Container (RSC)



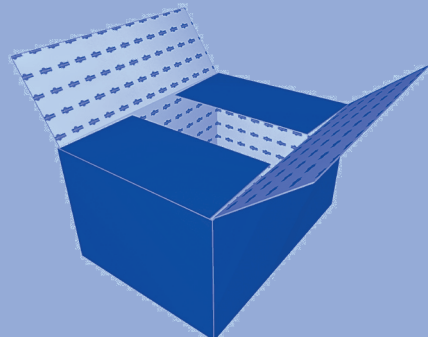
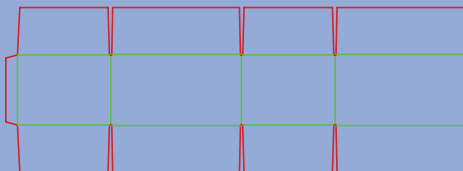
0201a

0200 Slotted Containers\
Regular Slotted Container (RSC)



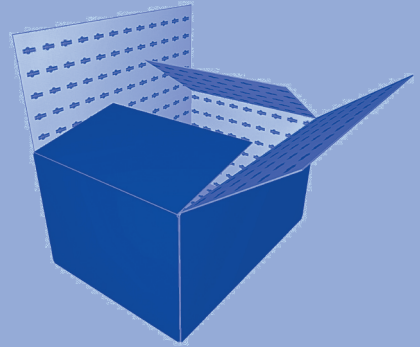
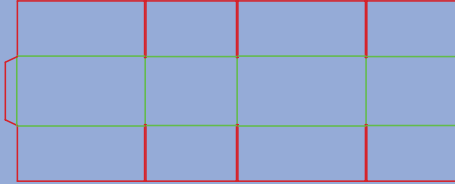
0201b

0200 Slotted Containers\
Regular Container (RC)



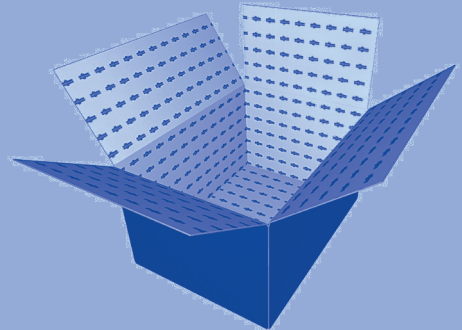
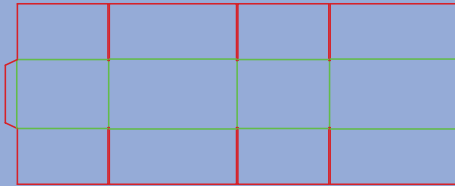
0202

0200 Slotted Containers\
Overlap Slotted Container (OSC)



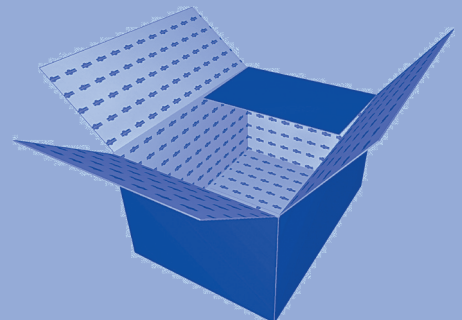
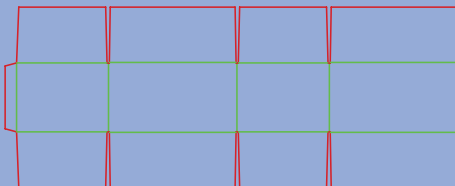
0202a

0200 Slotted Containers\
Overlap Slotted Container (OSC)



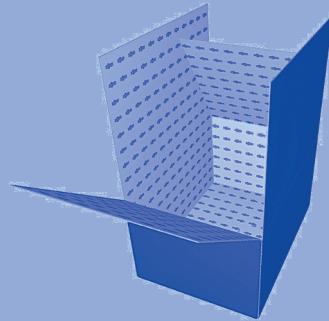
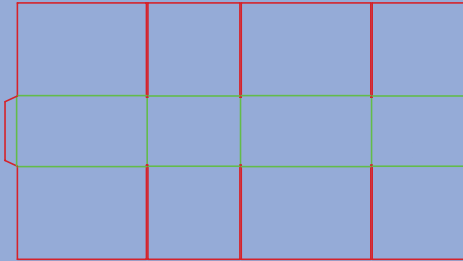
0202b

0200 Slotted Containers\
Overlap Container (OC)

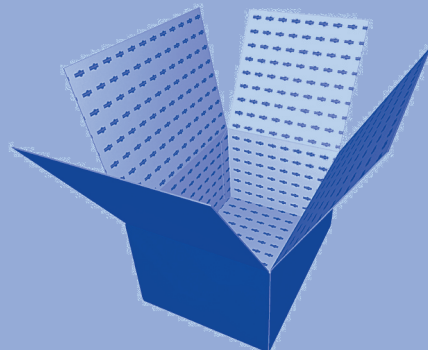
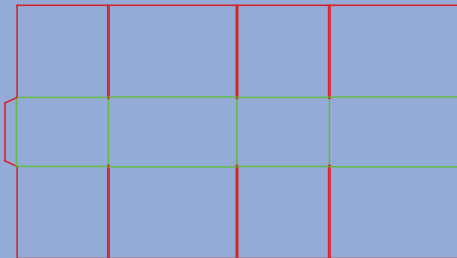


0203

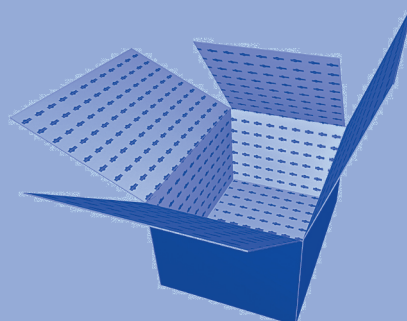
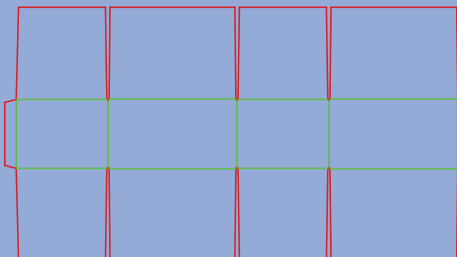
0200 Slotted Containers\
Full Overlap Slotted Container (FOL)

**0203a**

0200 Slotted Containers\
Full Overlap Slotted Container (FOL)

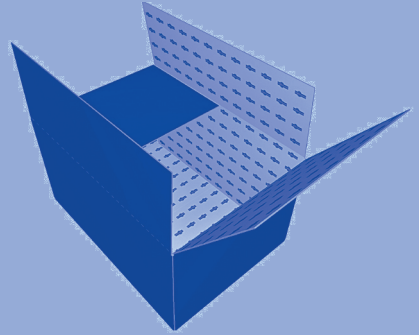
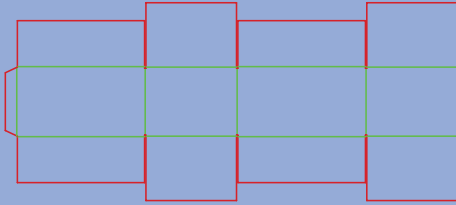
**0203b**

0200 Slotted Containers\
Full Overlap Container (FOL)



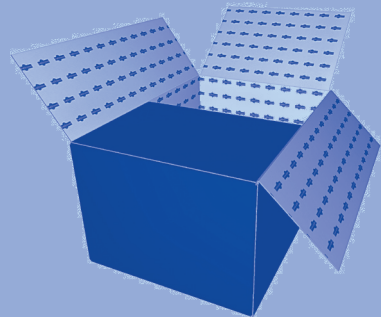
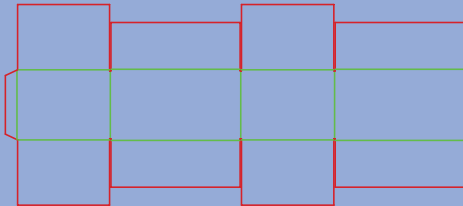
0204

0200 Slotted Containers\
Center Special Slotted Container (CSSC)



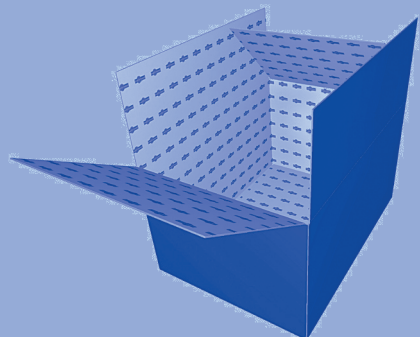
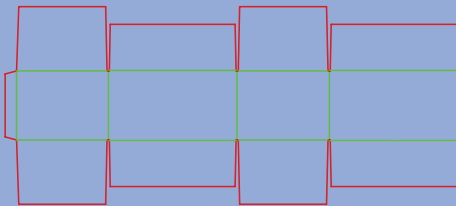
0204a

0200 Slotted Containers\
Center Special Slotted Container (CSSC)



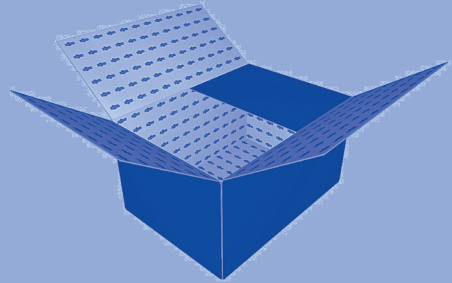
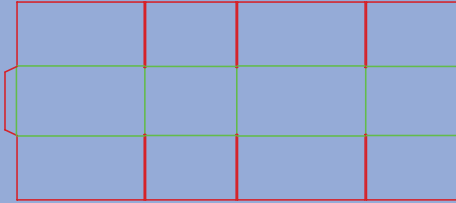
0204b

0200 Slotted Containers\
Center Special Container (CSC)



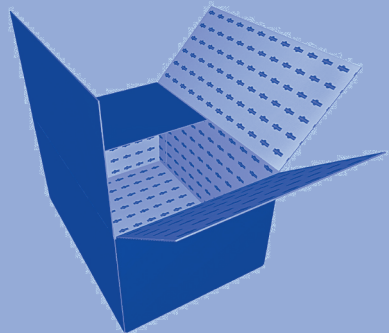
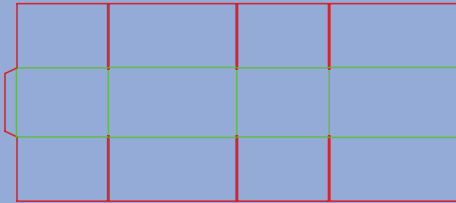
0205

0200 Slotted Containers\
Center Special Overlap Slotted Container (CSO)



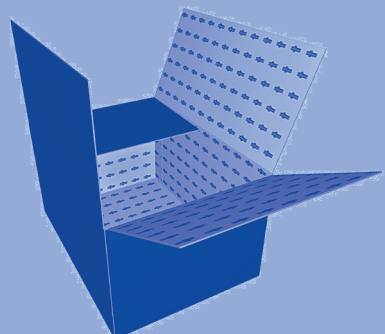
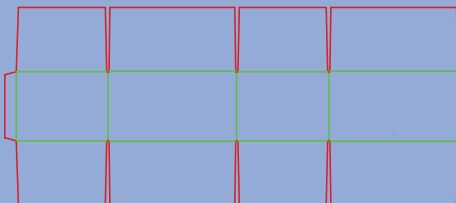
0205a

0200 Slotted Containers\
Center Special Overlap Slotted Container (CSO)



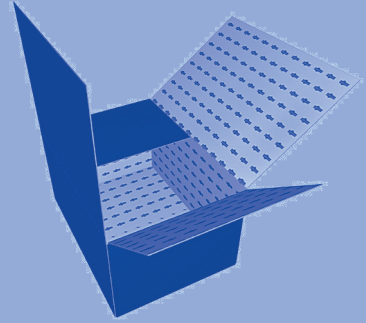
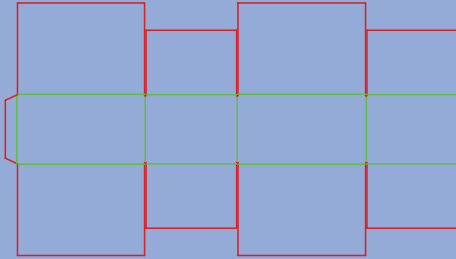
0205b

0200 Slotted Containers\
Center Special Overlap Container (CO)



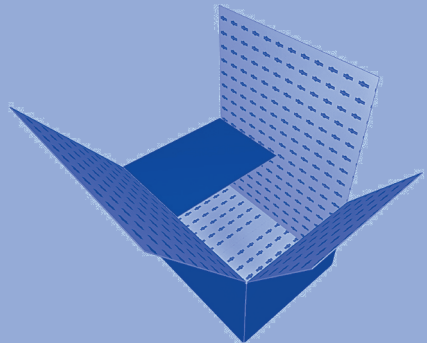
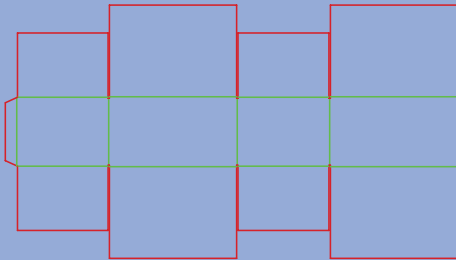
0206

0200 Slotted Containers\
Center Special Full Overlap Slotted Container (SFF)



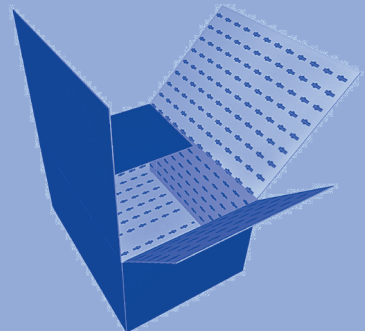
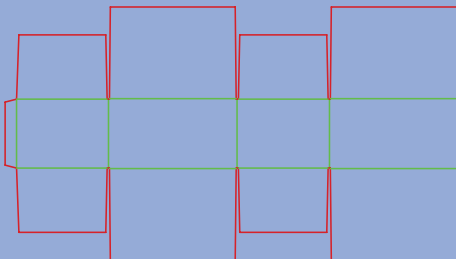
0206a

0200 Slotted Containers\
Center Special Full Overlap Slotted Container (SFF)



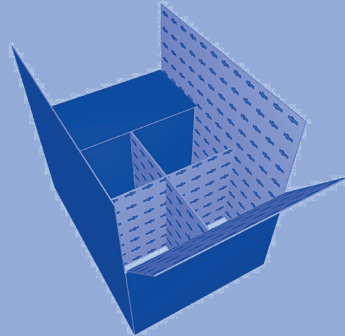
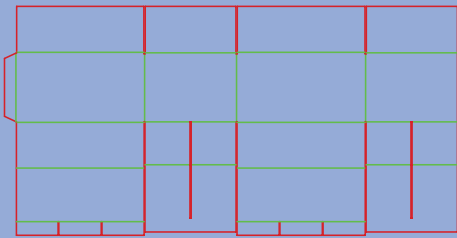
0206b

0200 Slotted Containers\
Center Special Full Overlap Container (SFF)



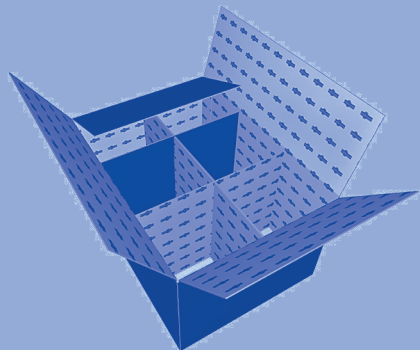
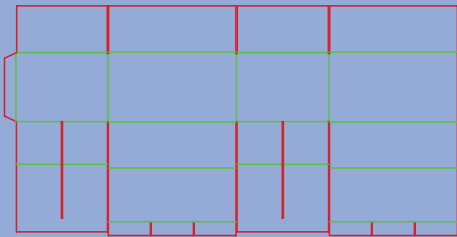
0207

0200 Slotted Containers\
6-Cell Regular Slotted Container



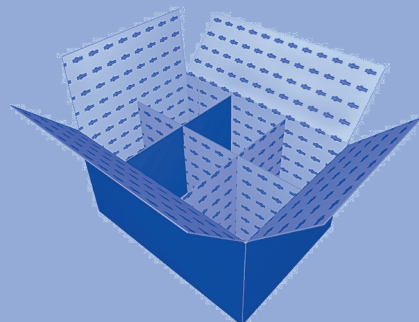
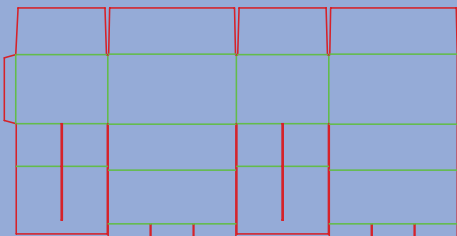
0207a

0200 Slotted Containers\
6-Cell Regular Slotted Container



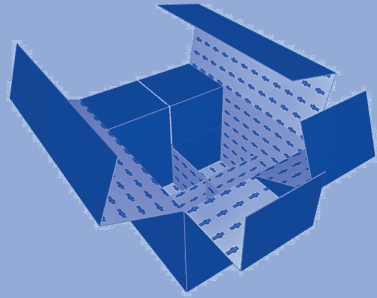
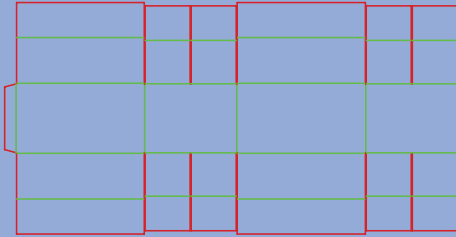
0207b

0200 Slotted Containers\
6-Cell Regular Container



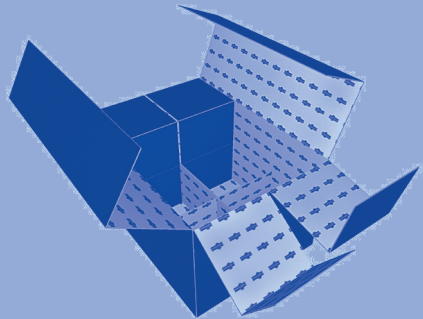
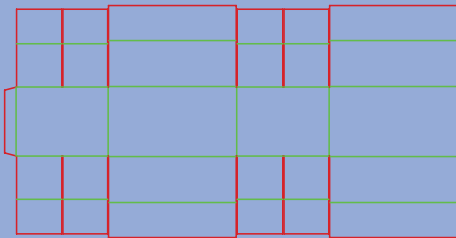
0208

*0200 Slotted Containers\
6-Cell Slotted Container*



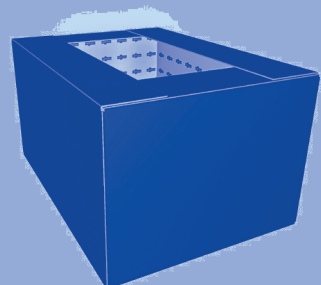
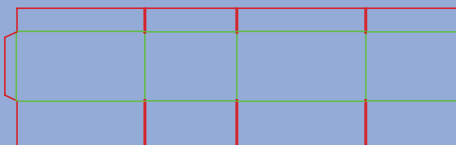
0208a

*0200 Slotted Containers\
6-Cell Slotted Container*



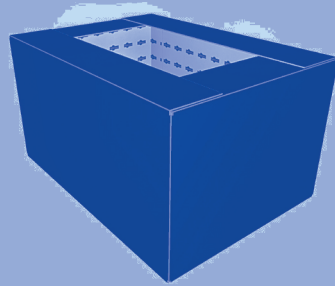
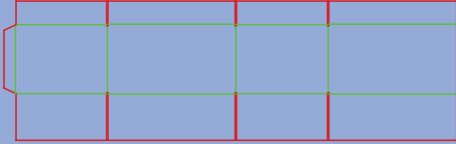
0209

*0200 Slotted Containers\
Flange Top Container - RSC Bottom*



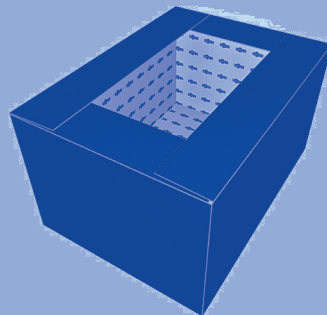
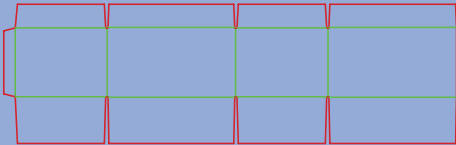
0209a

0200 Slotted Containers\
Flange Top Container - RSC Bottom



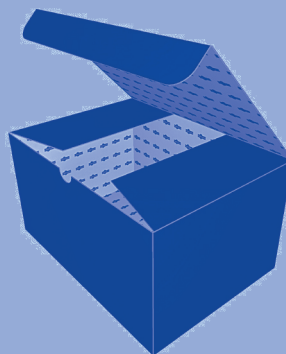
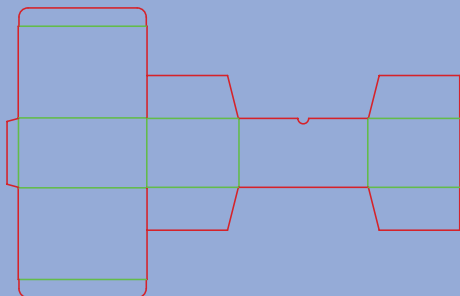
0209b

0200 Slotted Containers\
Flange Top Container - RC Bottom



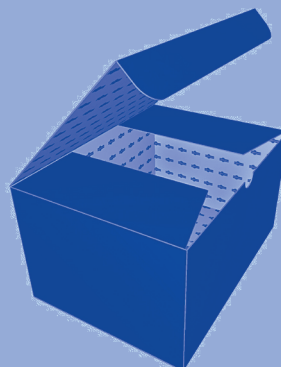
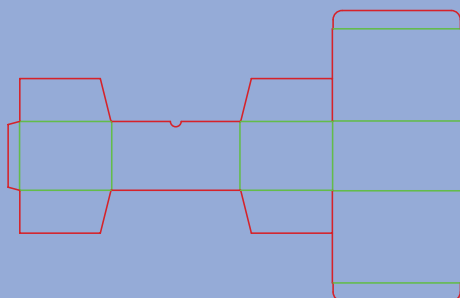
0210

0200 Slotted Containers\
Straight Friction Tuck Container



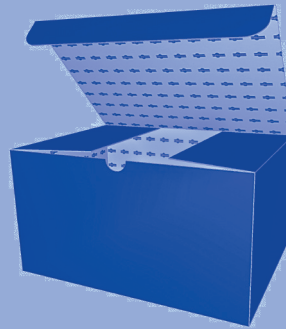
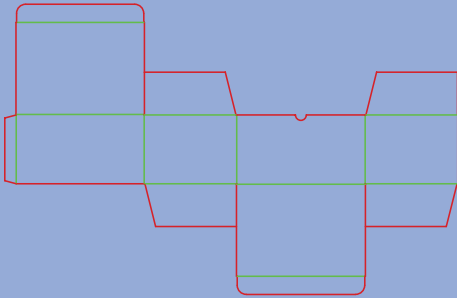
0210a

0200 Slotted Containers\
Straight Friction Tuck Container



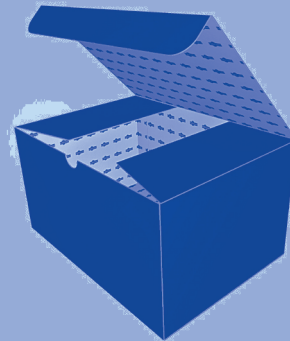
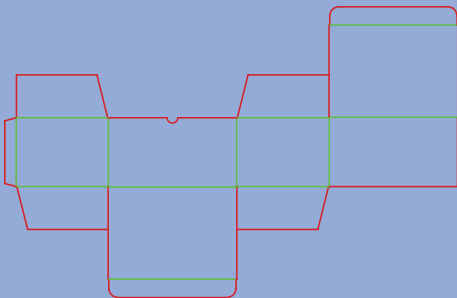
0211

0200 Slotted Containers\
Reverse Friction Tuck Container



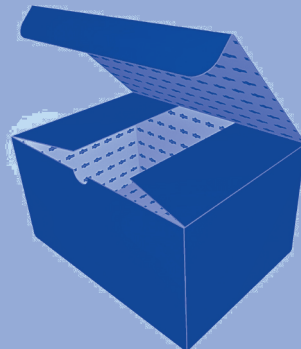
0211a

0200 Slotted Containers\
Reverse Friction Tuck Container



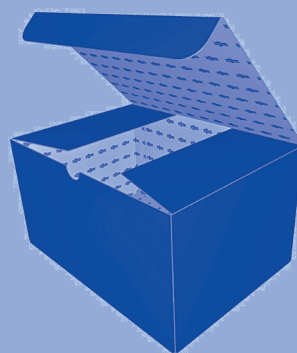
0212

0200 Slotted Containers\
Friction Tuck - RS Bottom Container



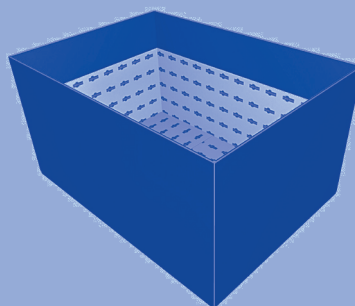
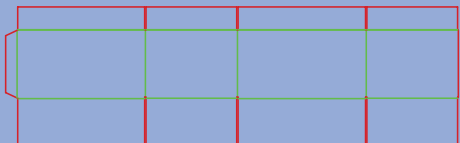
0212a

0200 Slotted Containers\
Friction Tuck - RS Bottom Container



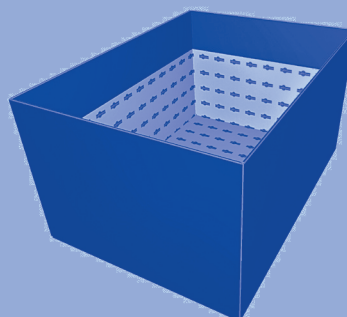
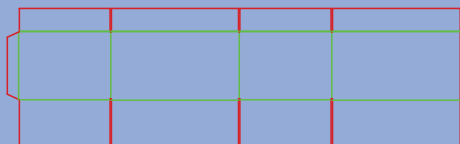
0214

0200 Slotted Containers\
Double Crease Top - RS Bottom Container



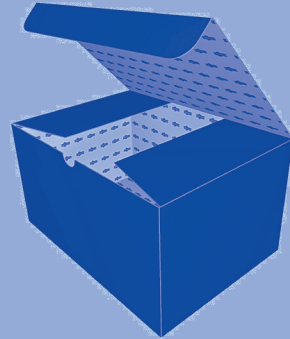
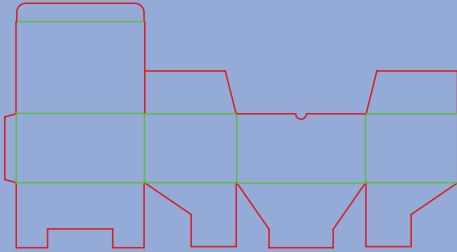
0214a

0200 Slotted Containers\
Double Crease Top - RS Bottom Container



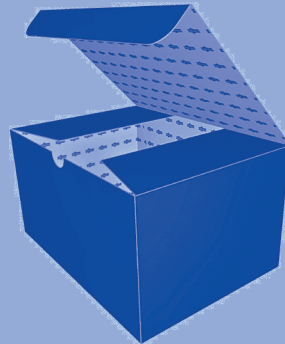
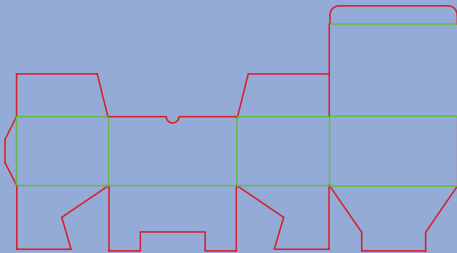
0215

0200 Slotted Containers\
Tuck Top - Snap Bottom Container



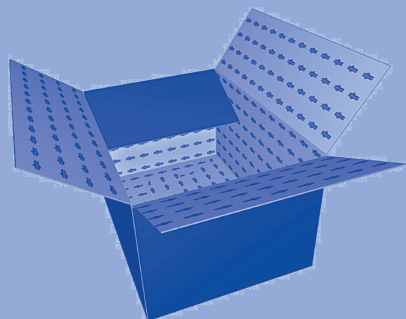
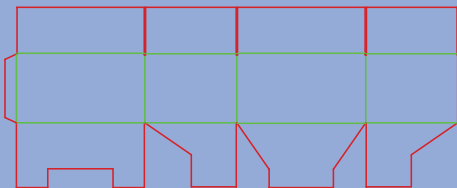
0215a

0200 Slotted Containers\
Tuck Top - Snap Bottom Container



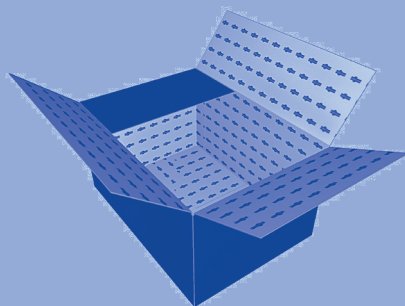
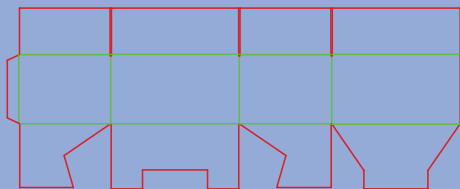
0216

0200 Slotted Containers\
RSC Top - Snap Bottom Container



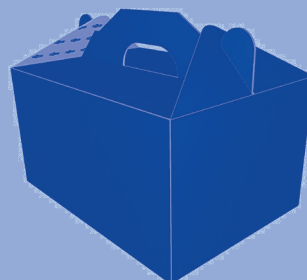
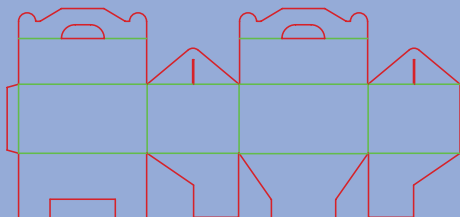
0216a

0200 Slotted Containers\
RSC Top - Snap Bottom Container



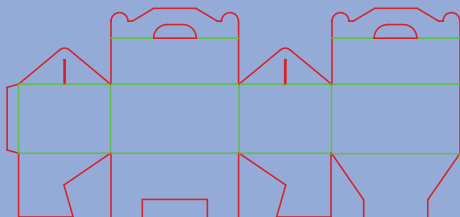
0217

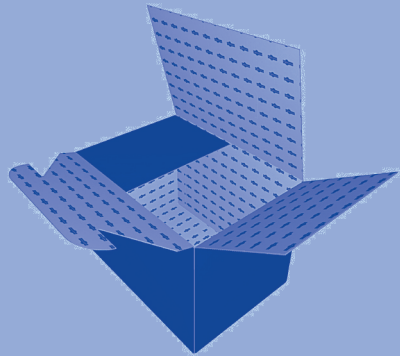
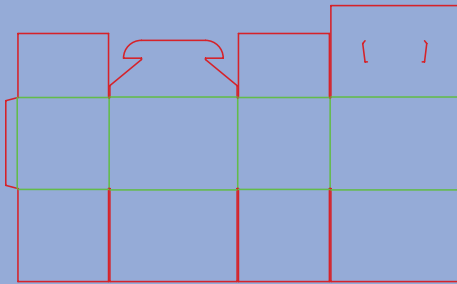
0200 Slotted Containers\
Carrying Handle Top - Snap Bottom Container



0217a

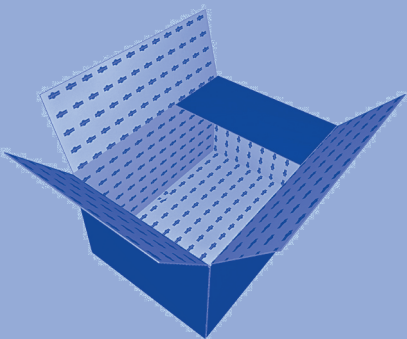
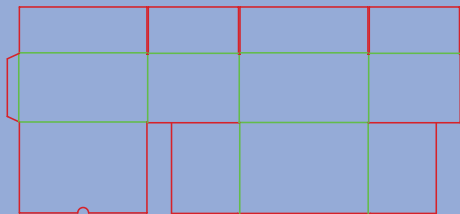
0200 Slotted Containers\
Carrying Handle Top - Snap Bottom Container



0218*0200 Slotted Containers\
Ear Hook Lock - FOL Bottom Container*

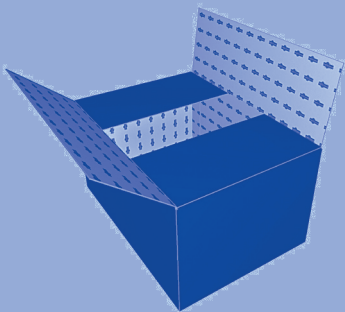
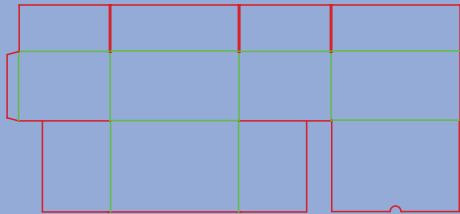
0225

0200 Slotted Containers\
Full Bottom File Box



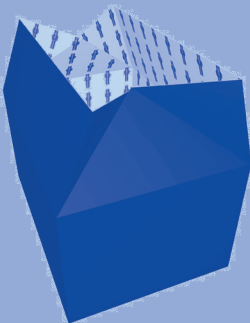
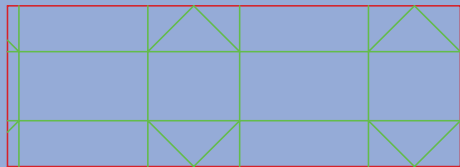
0225a

0200 Slotted Containers\
Full Bottom File Box



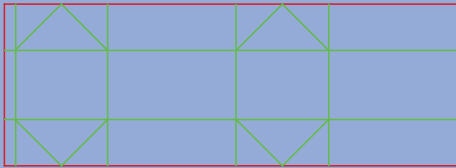
0226

0200 Slotted Containers\
Bellows Style Container



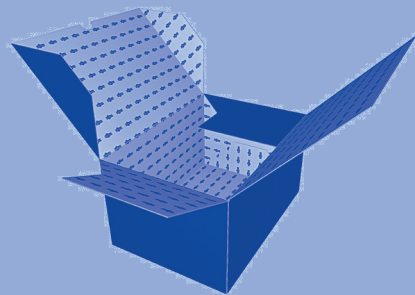
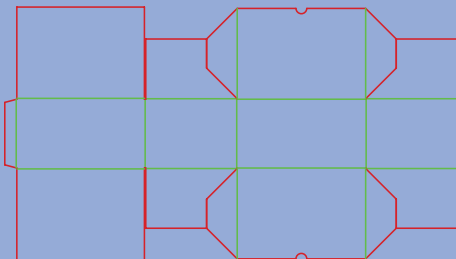
0226a

0200 Slotted Containers\
Bellows Style Container



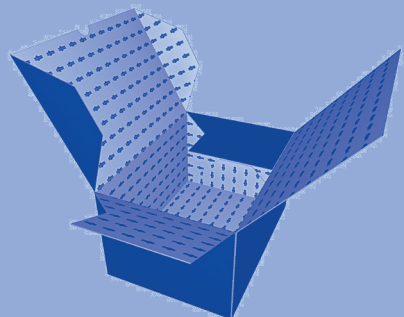
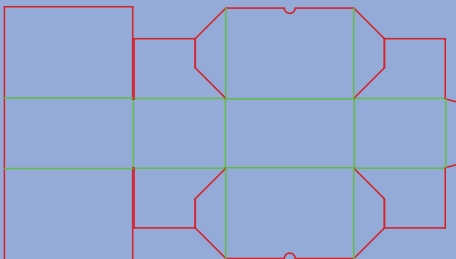
0227

0200 Slotted Containers\
Full Bottom File Box



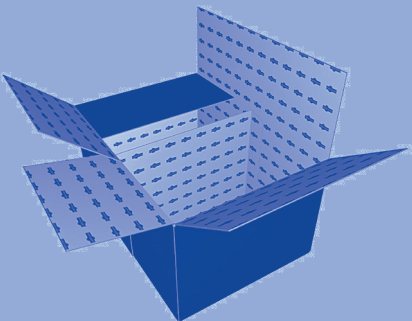
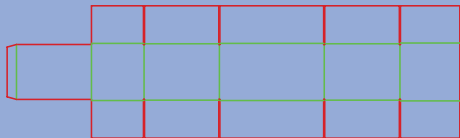
0227a

0200 Slotted Containers\
Full Bottom File Box



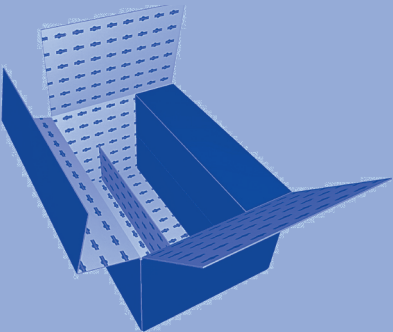
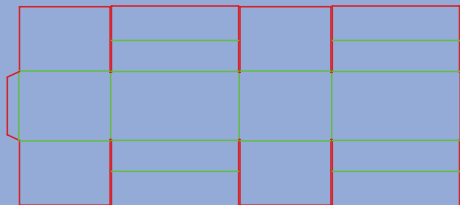
0228

0200 Slotted Containers\
Two Cell RSC Container



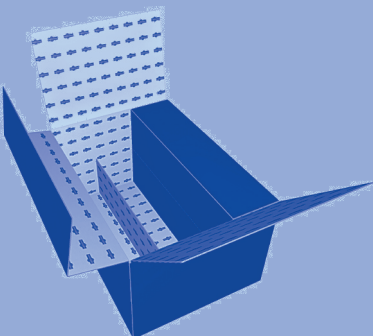
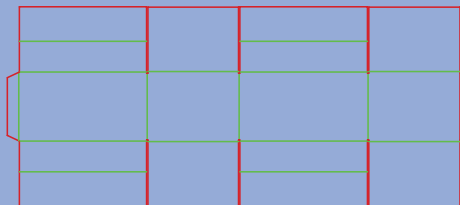
0229

0200 Slotted Containers\
Two Cell CSS Container



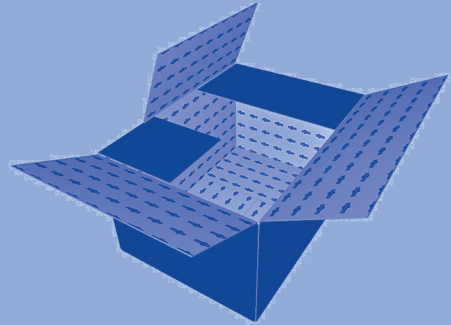
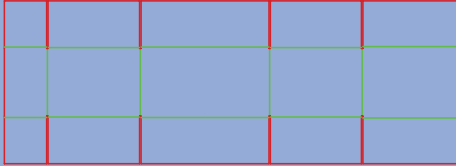
0229a

0200 Slotted Containers\
Three Cell CSS Container



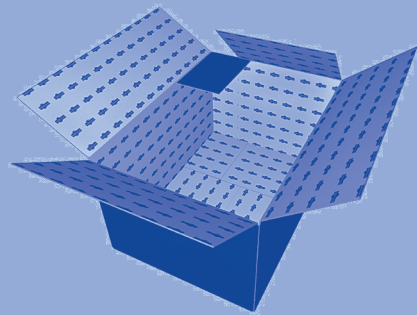
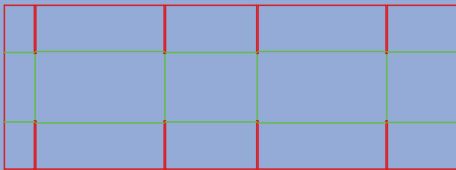
0230

0200 Slotted Containers\
Regular Slotted Container (RSC)



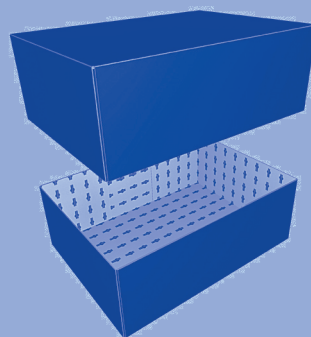
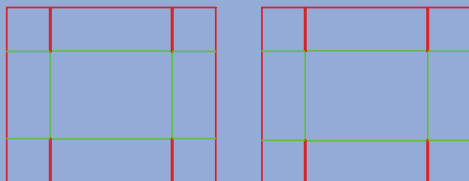
0231

0300 Telescope-type Boxes\
Regular Slotted Container (RSC)

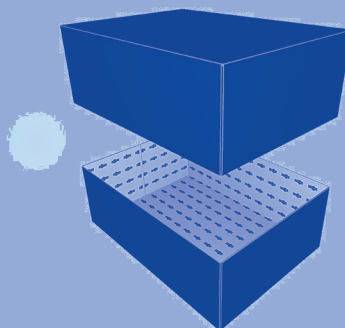
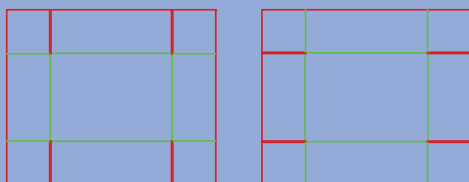


0300

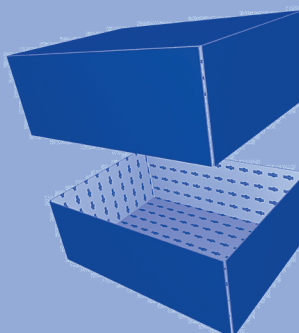
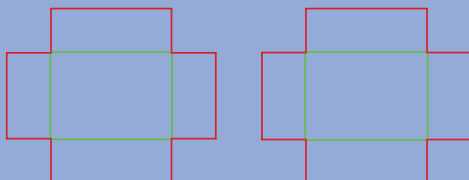
0300 Telescope-type Boxes\
Full Telescope Side Slotted Container (FTSSC)

**0301**

0300 Telescope-type Boxes\
Full Telescope End Slotted Container (FTESC)

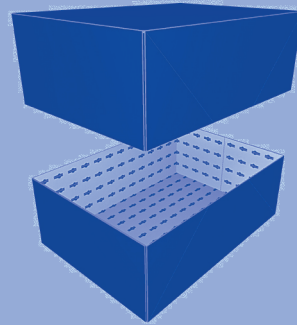
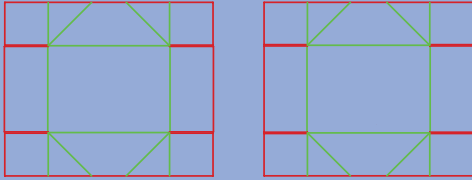
**0302**

0300 Telescope-type Boxes\
Full Telescope Container

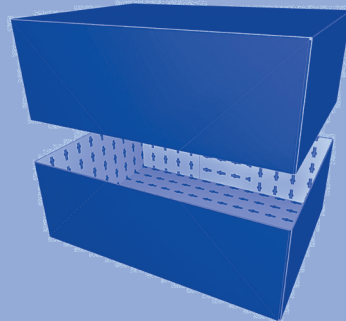
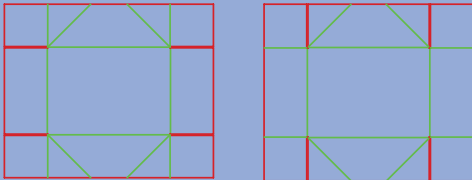


0303

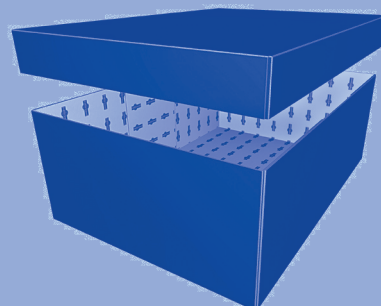
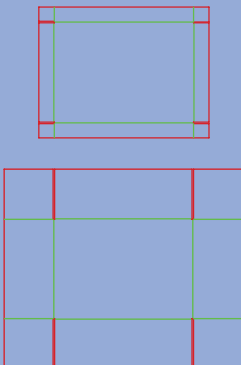
0300 Telescope-type Boxes\
FTESC with Folding Side Wall

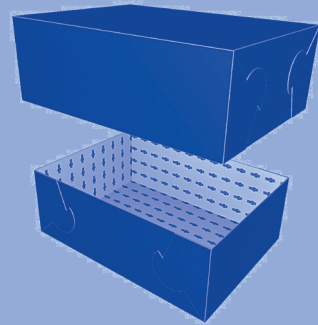
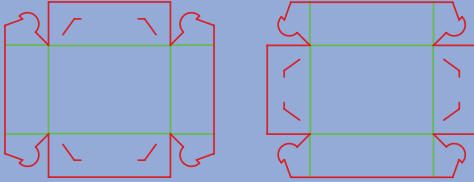
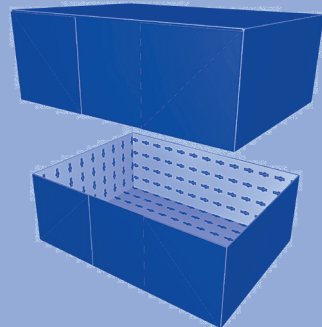
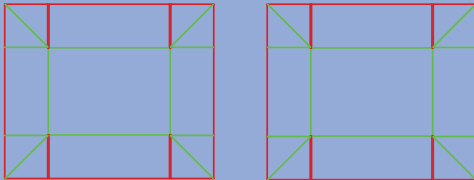
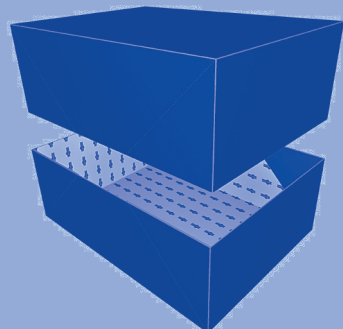
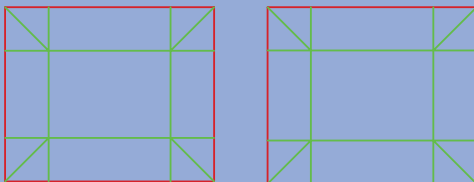
**0304**

0300 Telescope-type Boxes\
FTSSC with Folding Side Wall

**0306**

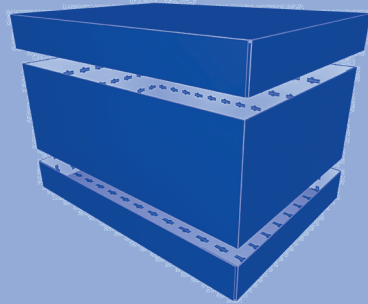
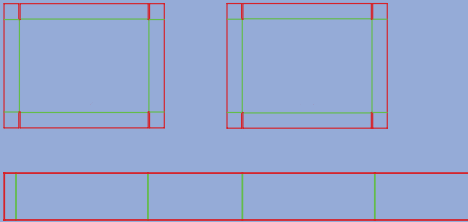
0300 Telescope-type Boxes\
Side Slotted Container with ES Cover



03070300 Telescope-type Boxes\
FTSSC with Ear Hook Lock Corners**0308**0300 Telescope-type Boxes\
FTSSC with Folding Flaps**0309**0300 Telescope-type Boxes\
Full Telescope Container with Gusset Flaps

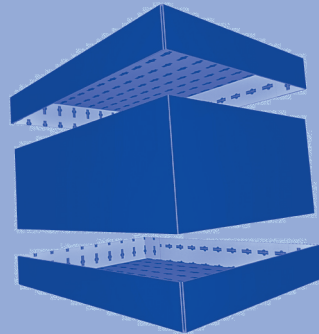
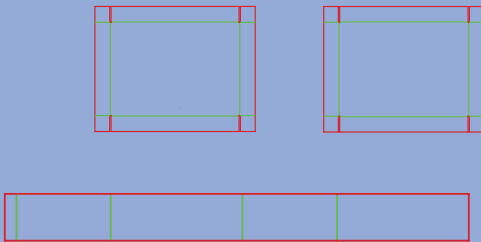
0310

0300 Telescope-type Boxes\
Double Side Slotted Cover Container



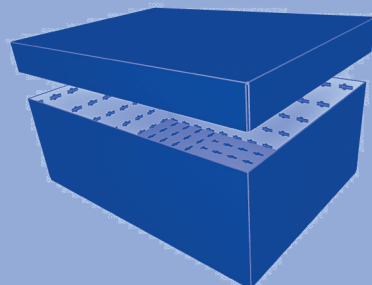
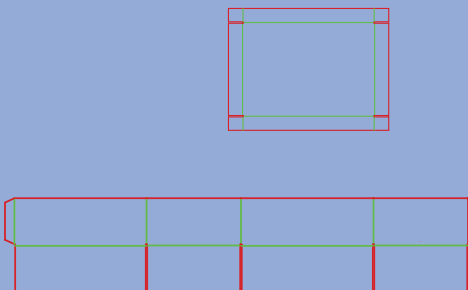
0310a

0300 Telescope-type Boxes\
Double Side Slotted Cover Container



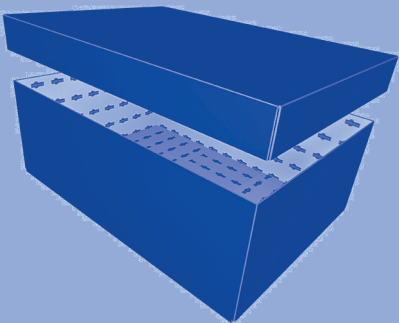
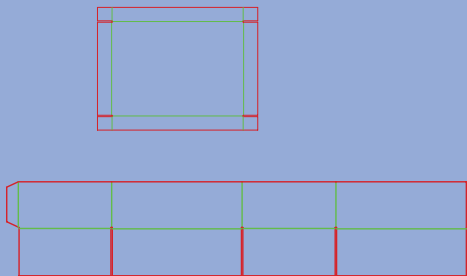
0312

0300 Telescope-type Boxes\
Half Slotted Container with ES Cover



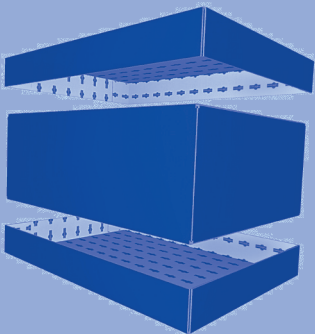
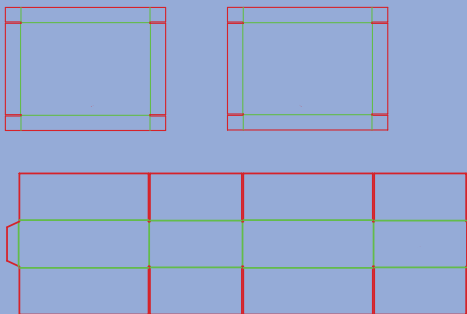
0312a

0300 Telescope-type Boxes\
Half Slotted Container with ES Cover



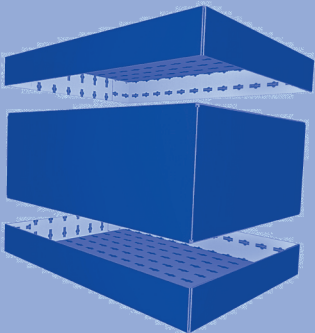
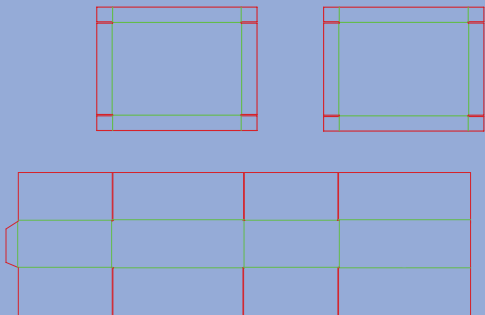
0313

0300 Telescope-type Boxes\
Regular Slotted Container with ES Cover



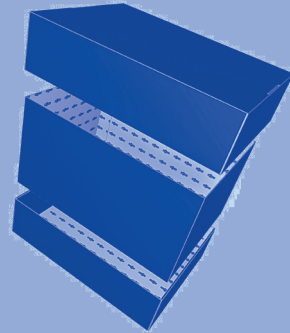
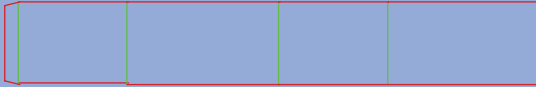
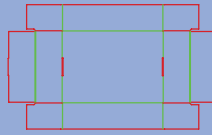
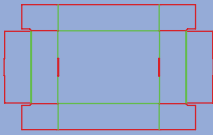
0313a

0300 Telescope-type Boxes\
Regular Slotted Container with ES Cover



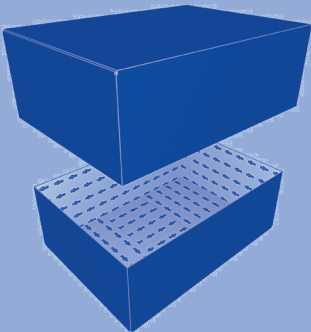
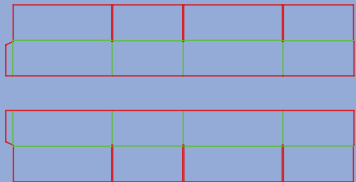
0314

0300 Telescope-type Boxes\
Self Locking Double End Wall Cover Container



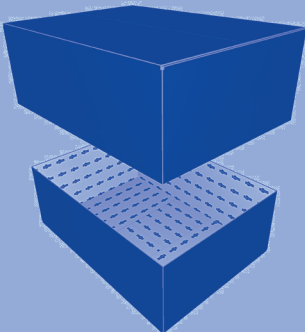
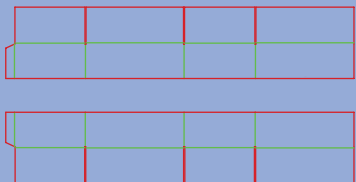
0320

0300 Telescope-type Boxes\
Full Telescope Half Slotted Container



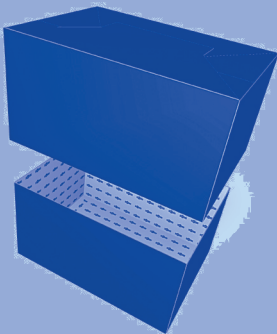
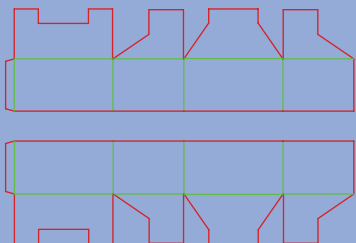
0320a

0300 Telescope-type Boxes\
Full Telescope Half Slotted Container



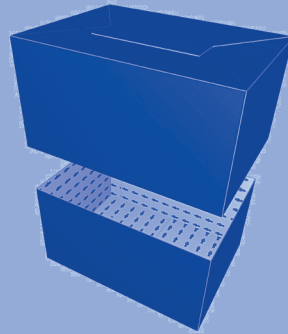
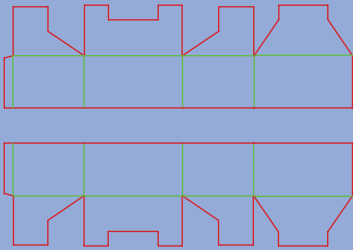
0321

0300 Telescope-type Boxes\
Full Telescope Snap Lock Container



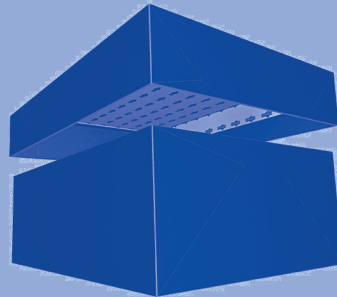
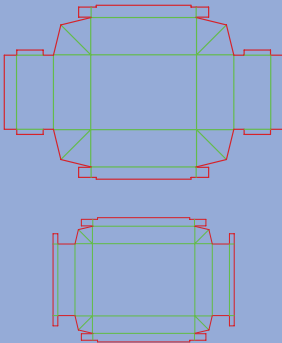
0321a

0300 Telescope-type Boxes\
Full Telescope Snap Lock Container



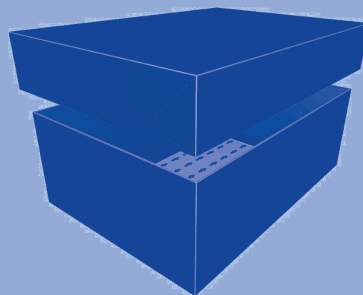
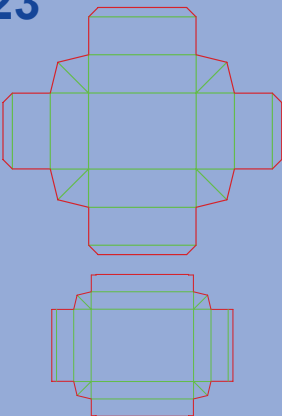
0322

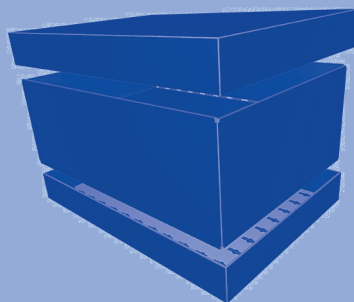
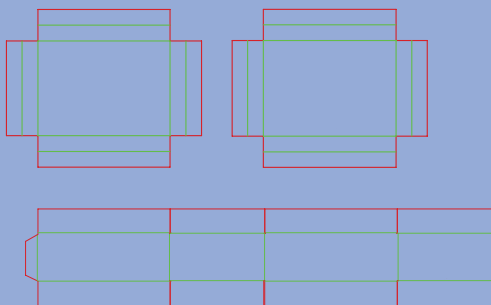
0300 Telescope-type Boxes\
Non-Glued Container and Cover



0323

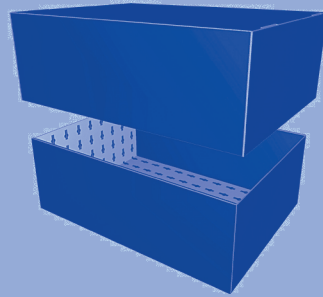
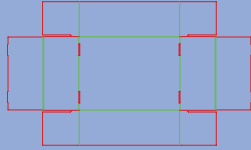
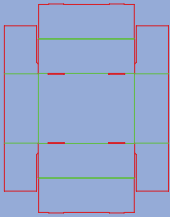
0300 Telescope-type Boxes\
Gusset Foot-Lock Container and Cover



0325*0300 Telescope-type Boxes\
Interlocking Double Cover Container*

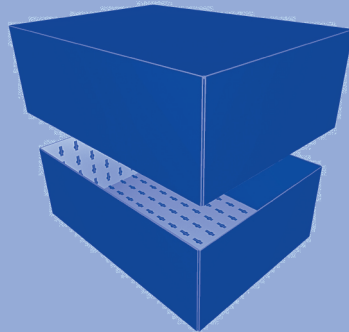
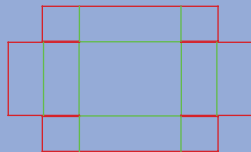
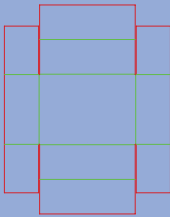
0330

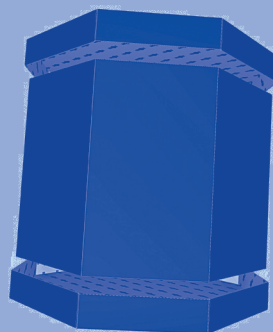
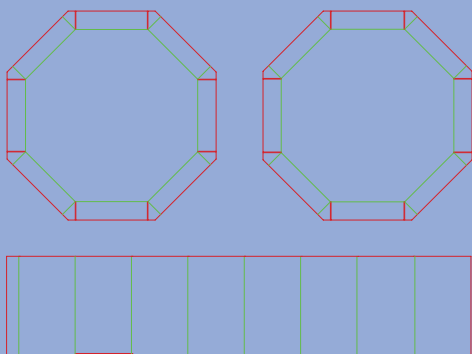
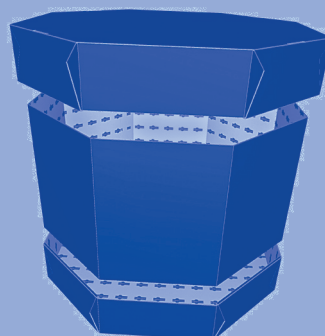
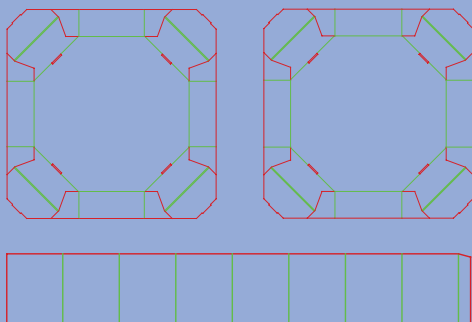
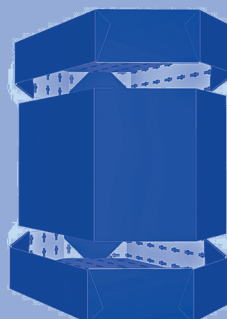
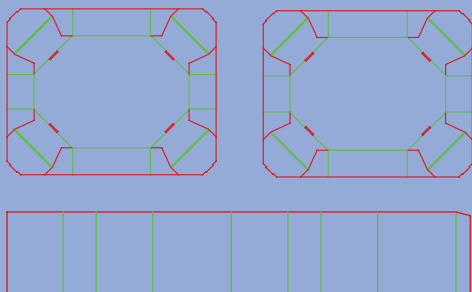
0300 Telescope-type Boxes\
Full Telescope Self-Locking Wall Container



0331

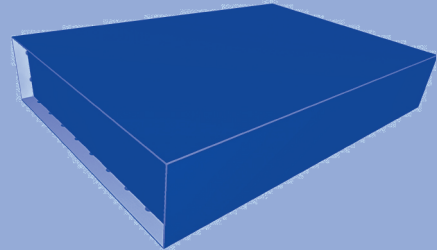
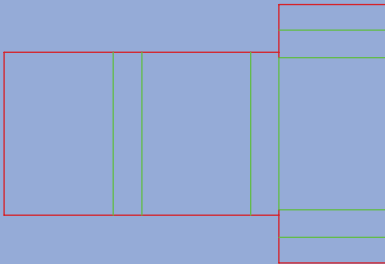
0300 Telescope-type Boxes\
Full Telescope Container



03500300 Telescope-type Boxes\
Octagonal Double Cover Container**0351**0300 Telescope-type Boxes\
Octagonal Self Locking Double Cover Container**0352**0300 Telescope-type Boxes\
Octagonal Self Locking Double Cover Container

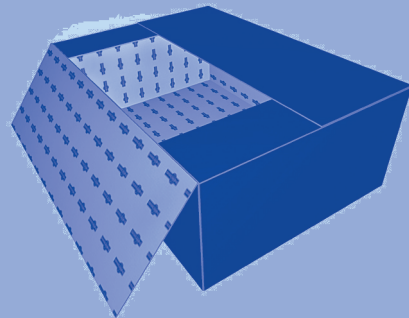
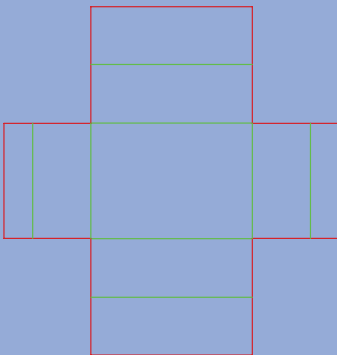
0400

0400 Folder-type Boxes&Trays\
One Piece Folder



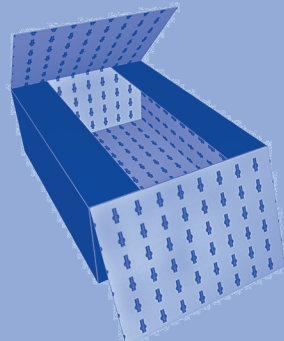
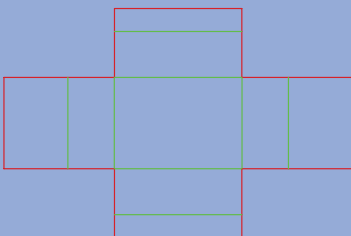
0401

0400 Folder-type Boxes&Trays\
One Piece Folder (W)



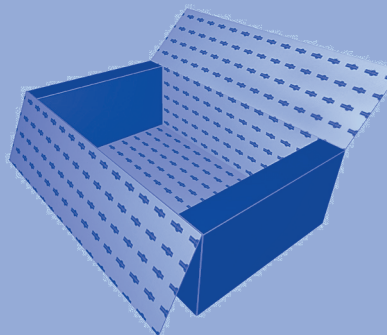
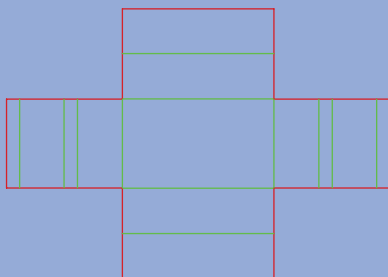
0402

0400 Folder-type Boxes&Trays\
One Piece Folder (L)



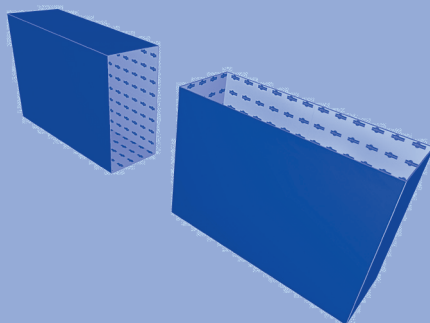
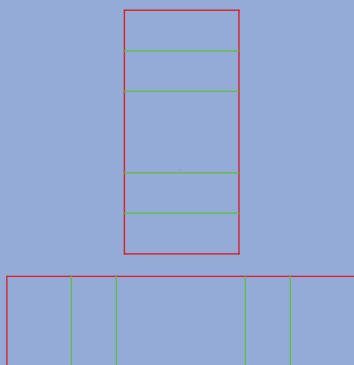
0403

0400 Folder-type Boxes&Trays\
One Piece Folder with End Buffers



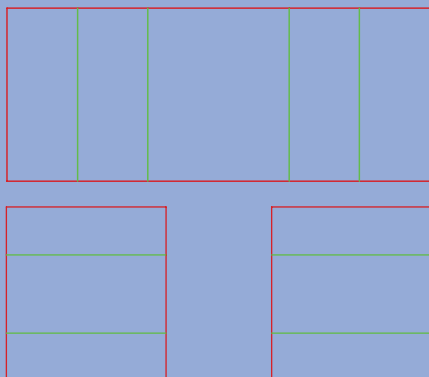
0404

0400 Folder-type Boxes&Trays\
Folder Type Tube



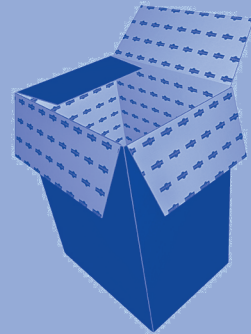
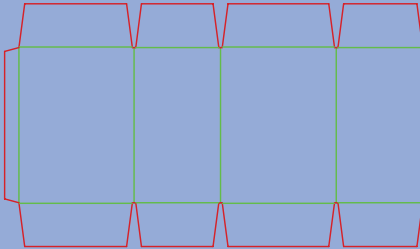
0405

0400 Folder-type Boxes&Trays\
Bliss Style Container



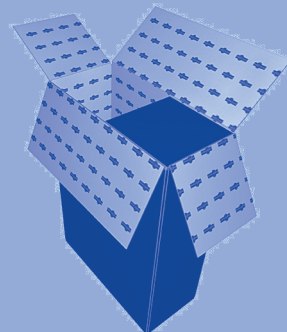
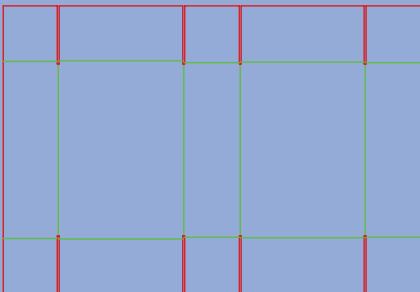
0406

0400 Folder-type Boxes&Trays\
Wrap Around Blank



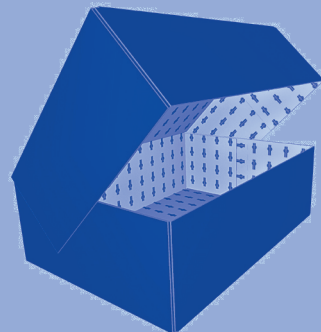
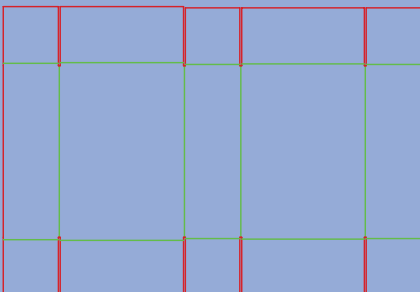
0409

0400 Folder-type Boxes&Trays\
Five Panel Folder (FPF)



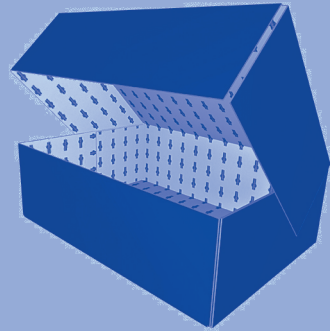
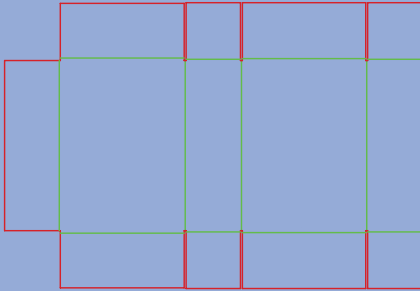
0409a

0400 Folder-type Boxes&Trays\
FPF with Different Panel Heights



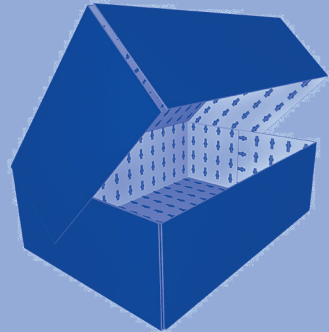
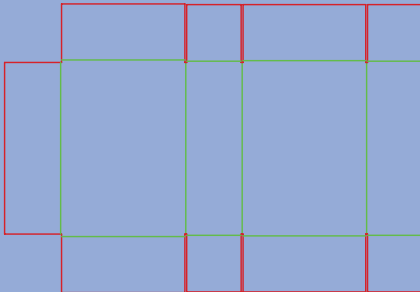
0410

0400 Folder-type Boxes&Trays\
Five Panel Folder



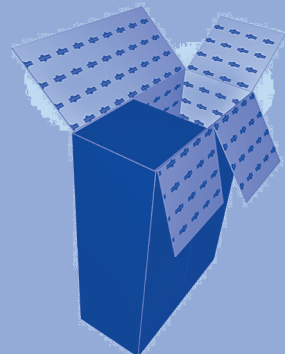
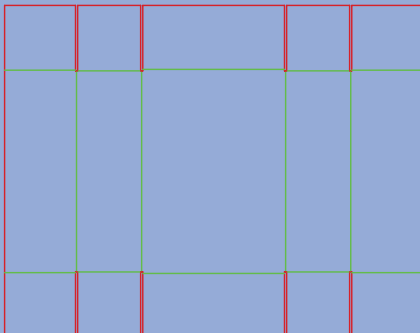
0410a

0400 Folder-type Boxes&Trays\
FPF with Diverse Panel Heights



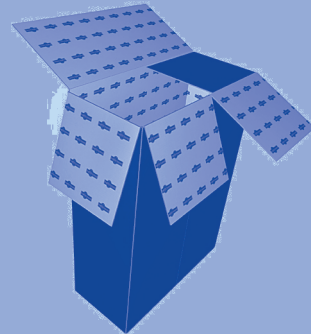
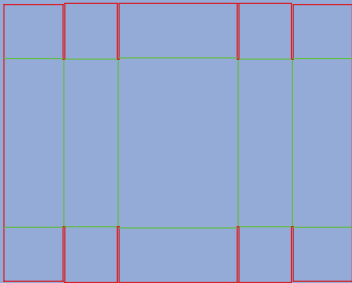
0411

0400 Folder-type Boxes&Trays\
Center Seam FPF



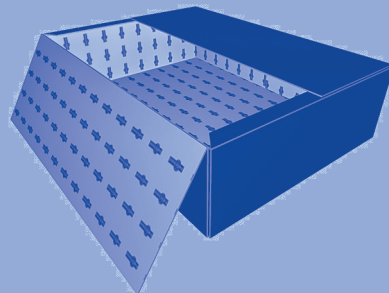
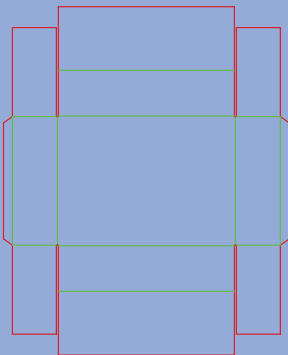
0411a

0400 Folder-type Boxes&Trays\
Center Seam FPF with Diverse Panel Heights



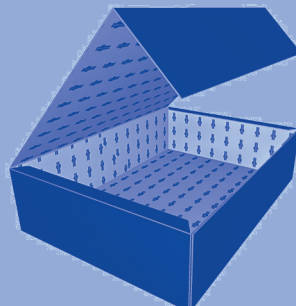
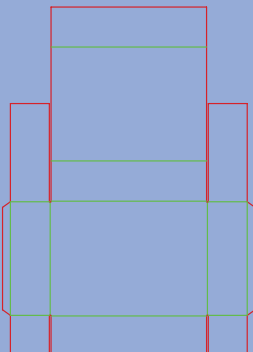
0412

0400 Folder-type Boxes&Trays\
One Piece Folder with Dust Flaps (OPF)



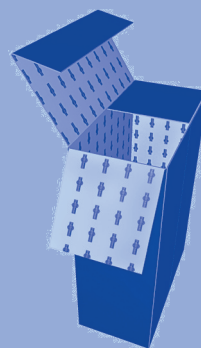
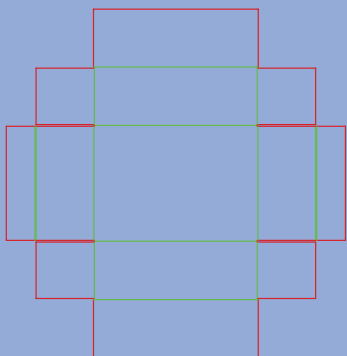
0413

0400 Folder-type Boxes&Trays\
One Piece Folder with Dust Flaps

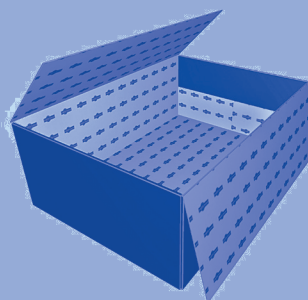
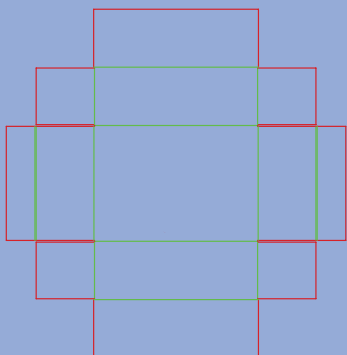


0415

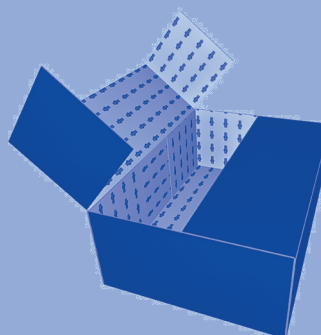
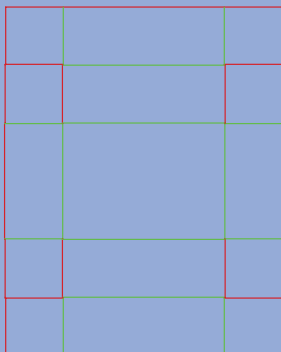
0400 Folder-type Boxes&Trays\
One Piece Folder with Dust Flaps

**0415a**

0400 Folder-type Boxes&Trays\
One Piece Folder with Dust Flaps

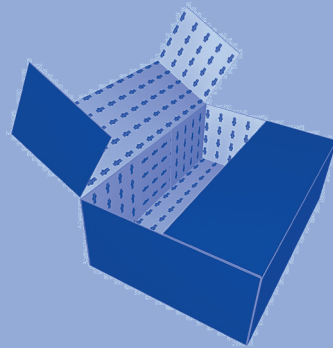
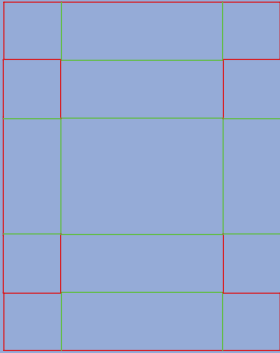
**0416**

0400 Folder-type Boxes&Trays\
OPF with Dust and Tuck Flaps



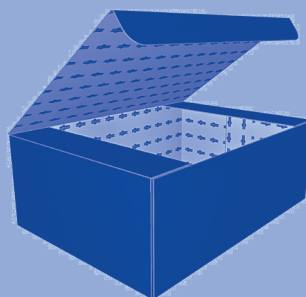
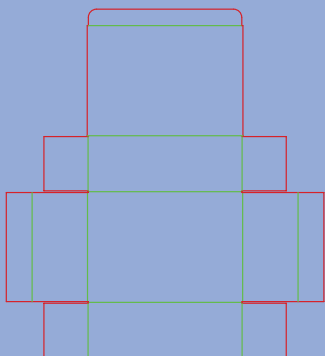
0416a

0400 Folder-type Boxes&Trays\
OPF with Dust and Tuck Flaps



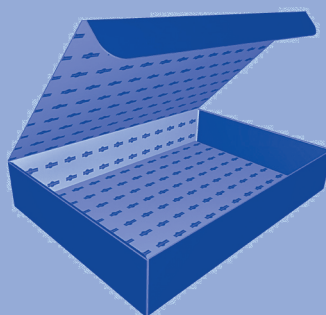
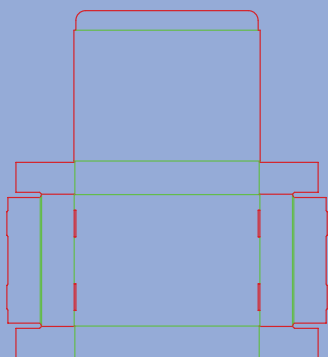
0420

0400 Folder-type Boxes&Trays\
One Piece Folder with Dust Flaps and Hinged Lid



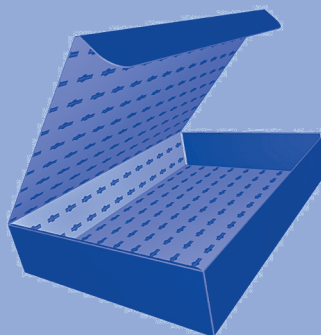
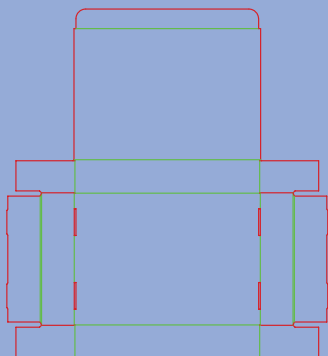
0421

0400 Folder-type Boxes&Trays\
Tray with Self Locking End Wall and Hinged Lid



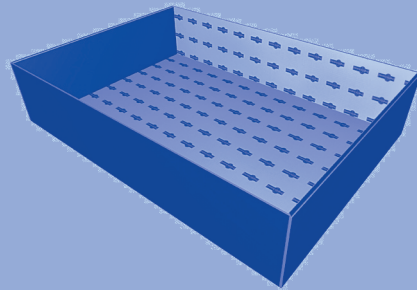
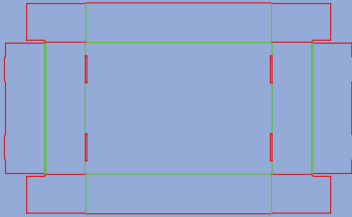
0421a

0400 Folder-type Boxes&Trays\
Tray with Self Locking Wall and Hinged Lid



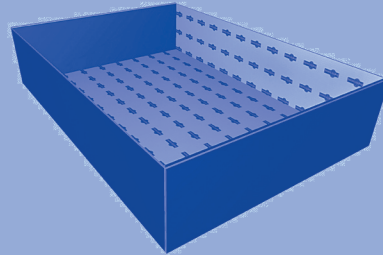
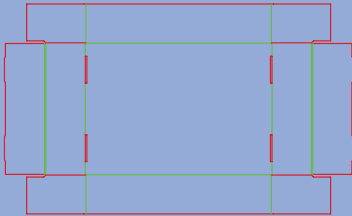
0422

0400 Folder-type Boxes&Trays\
Tray with Self Locking Wall



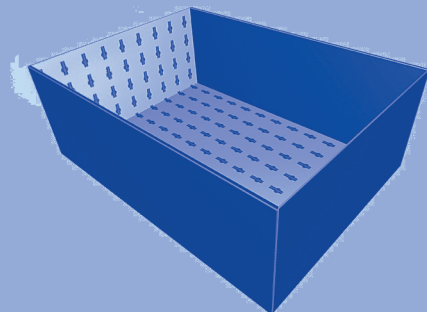
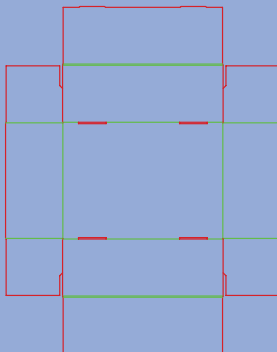
0422a

0400 Folder-type Boxes&Trays\
Tray with Self Locking Wall



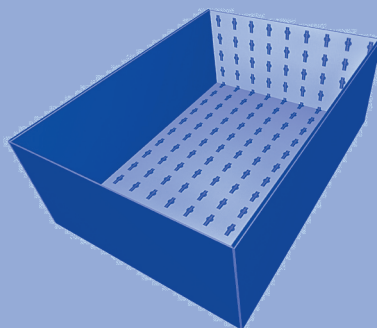
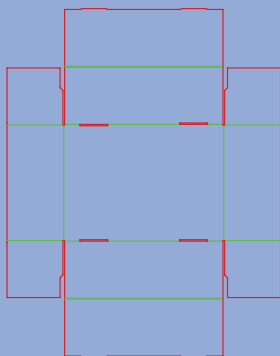
0423

0400 Folder-type Boxes&Trays\
Tray with Self Locking Wall

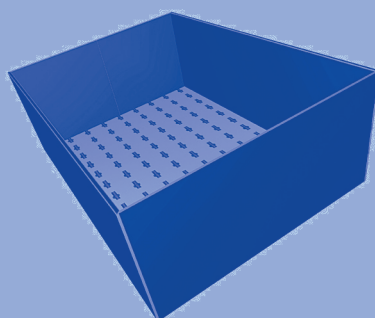
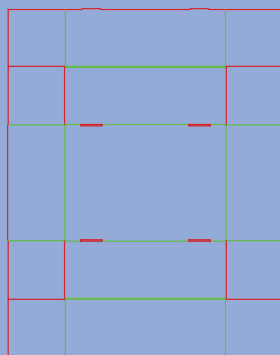


0423a

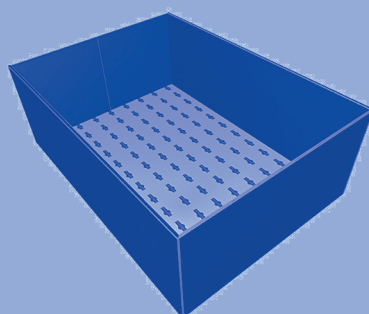
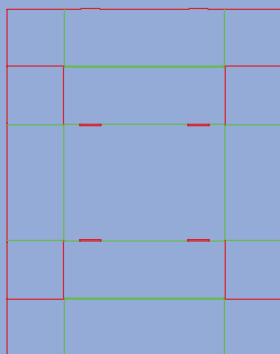
0400 Folder-type Boxes&Trays\
Tray with Self Locking Wall

**0424**

0400 Folder-type Boxes&Trays\
Tray with Self Locking Wall

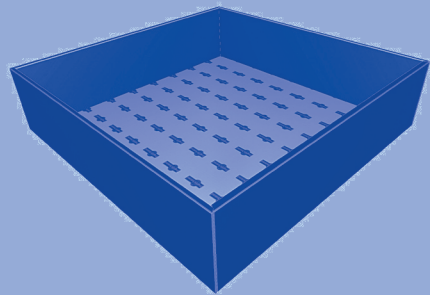
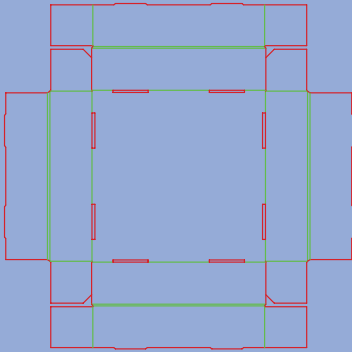
**0424a**

0400 Folder-type Boxes&Trays\
Tray with Self Locking Wall



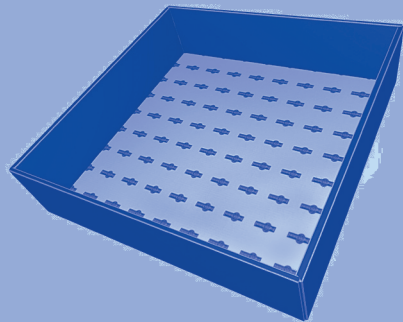
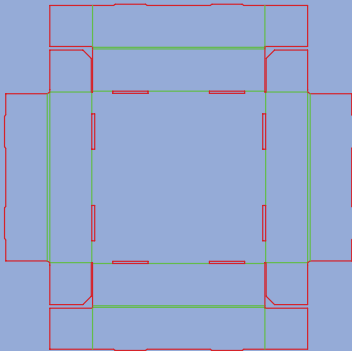
0425

0400 Folder-type Boxes&Trays\
Tray with Self Locking Walls



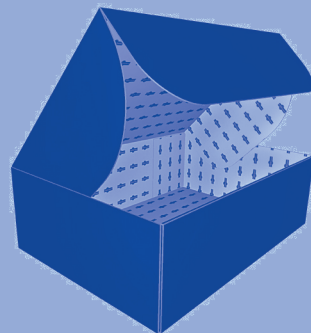
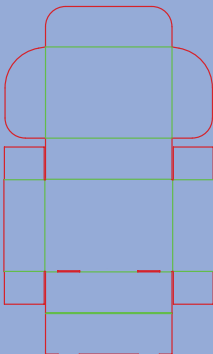
0425a

0400 Folder-type Boxes&Trays\
Tray with Self Locking Walls



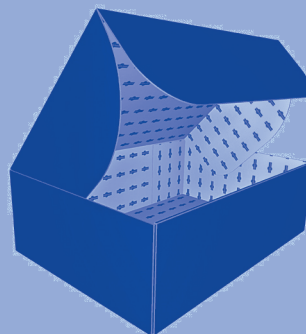
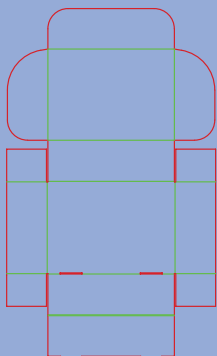
0426

0400 Folder-type Boxes&Trays\
Tray with Self Locking Wall and Hinged Lid

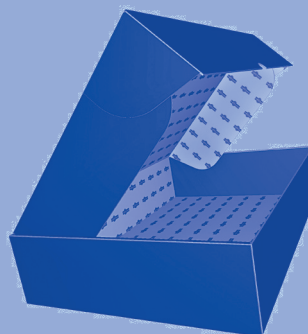
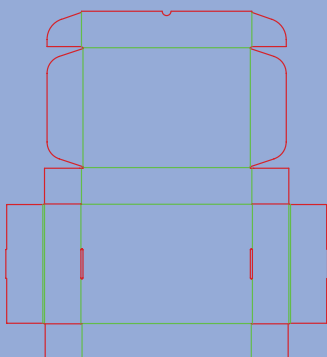


0426a

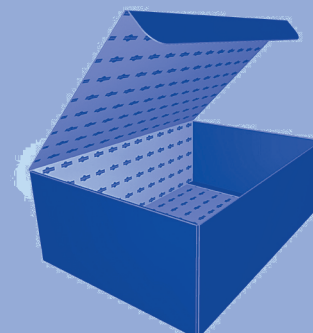
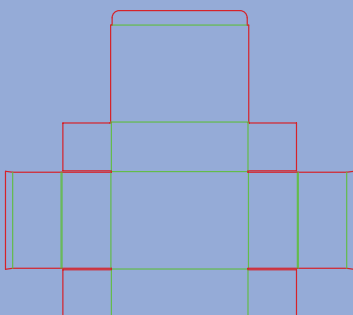
0400 Folder-type Boxes&Trays\
 Tray with Self Locking Wall and Hinged Lid

**0427**

0400 Folder-type Boxes&Trays\
 Tray with Self Locking Wall and Locking Ears

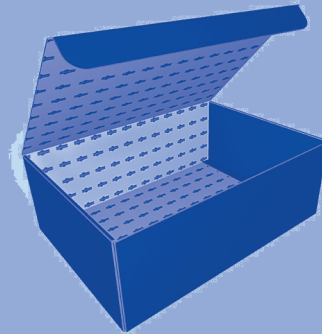
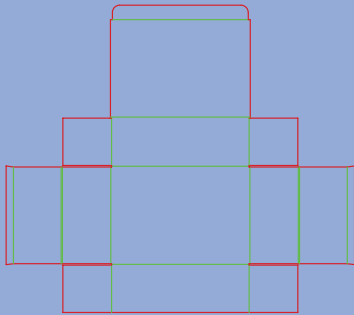
**0428**

0400 Folder-type Boxes&Trays\
 Tray with Foot-Lock and Hinged Lid



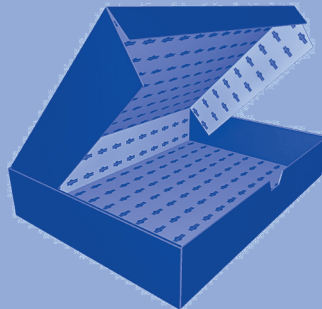
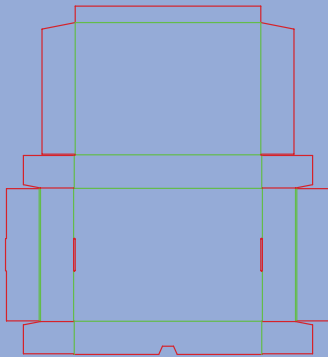
0428a

0400 Folder-type Boxes&Trays\
Tray with Foot-Lock and Hinged Lid



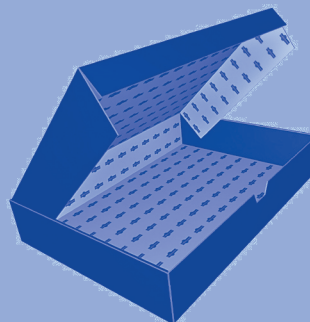
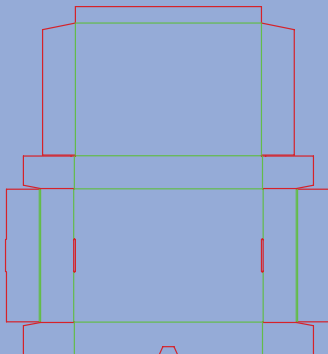
0429

0400 Folder-type Boxes&Trays\
Tray with Self Locking Wall and Hinged Lid



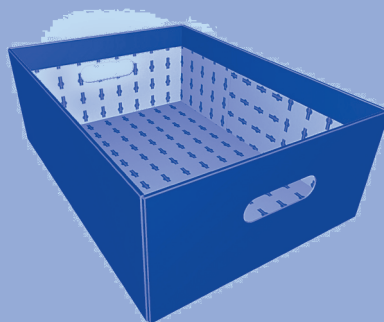
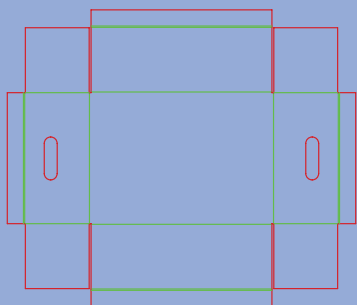
0429a

0400 Folder-type Boxes&Trays\
Tray with Self Locking Wall and Hinged Lid



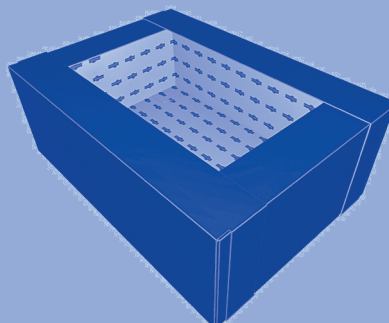
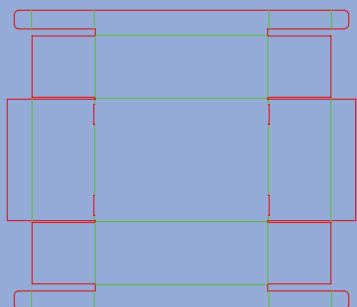
0430

0400 Folder-type Boxes&Trays\
Tray with Carrying Handle



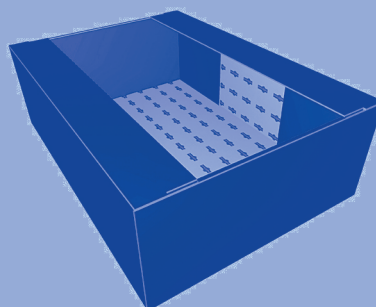
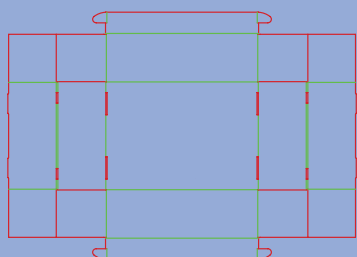
0431

0400 Folder-type Boxes&Trays\
Self Locking Tray



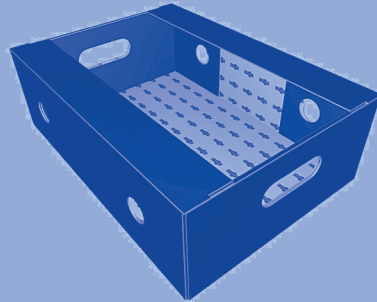
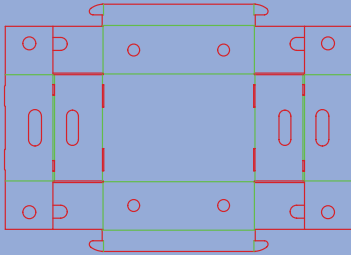
0432

0400 Folder-type Boxes&Trays\
Self Locking Tray



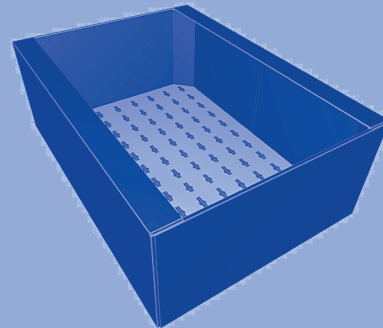
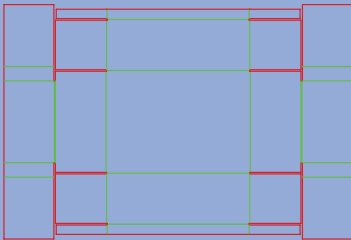
0432a

0400 Folder-type Boxes&Trays\
Self Locking Tray



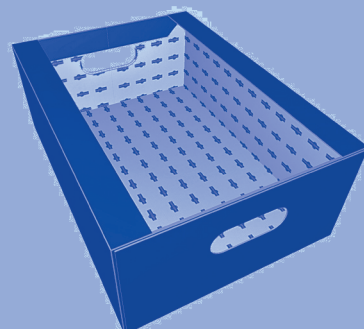
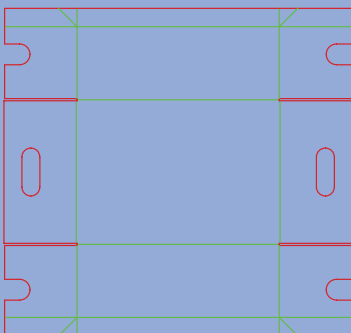
0433

0400 Folder-type Boxes&Trays\
Self Locking Tray



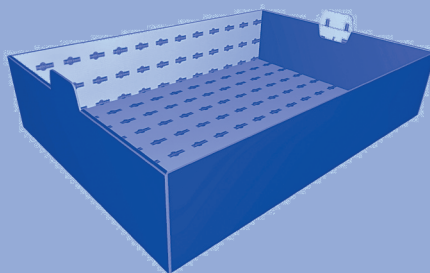
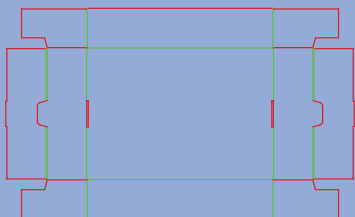
0434

0400 Folder-type Boxes&Trays\
Self Locking Tray with Carrying Handle



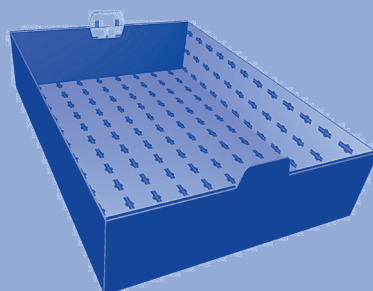
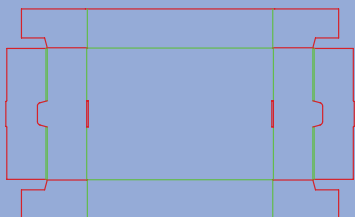
0435

0400 Folder-type Boxes&Trays\
Tray with Self Locking Wall



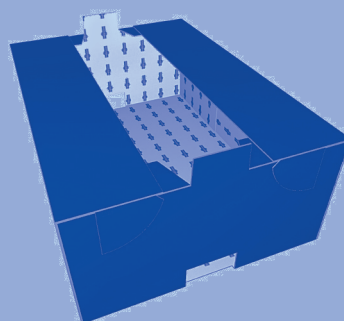
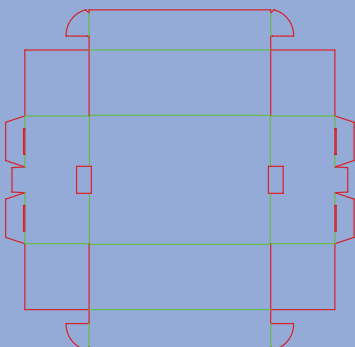
0435a

0400 Folder-type Boxes&Trays\
Tray with Self Locking Wall



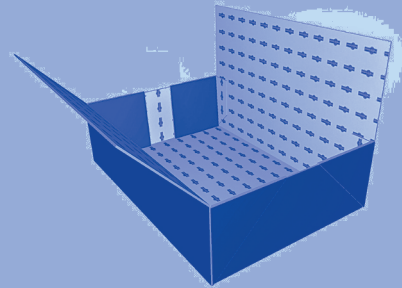
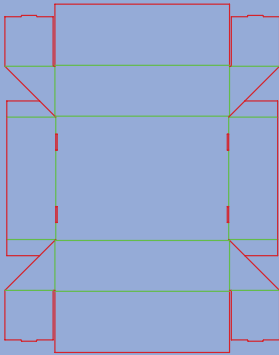
0436

0400 Folder-type Boxes&Trays\
Self Locking Tray



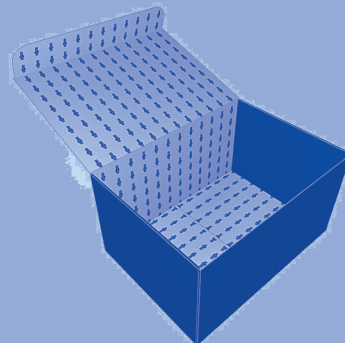
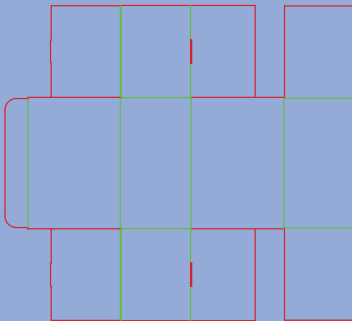
0437

0400 Folder-type Boxes&Trays\
Self Locking Tray



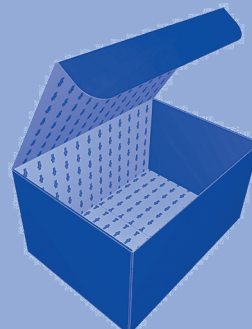
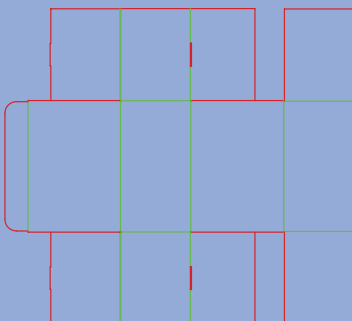
0439

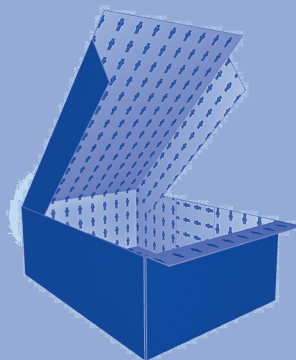
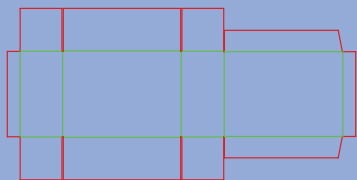
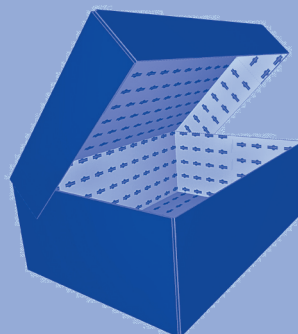
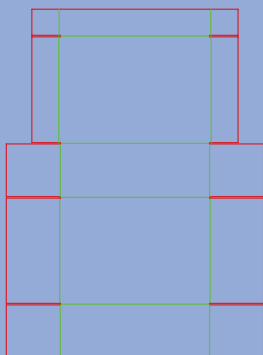
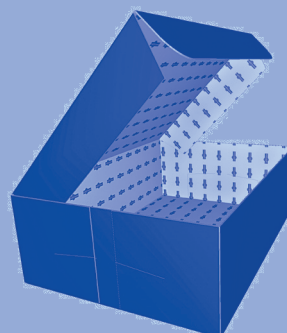
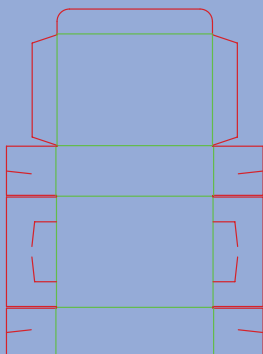
0400 Folder-type Boxes&Trays\
Self Locking Tray with Interior Bottom Flaps



0439a

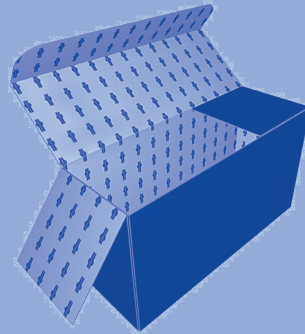
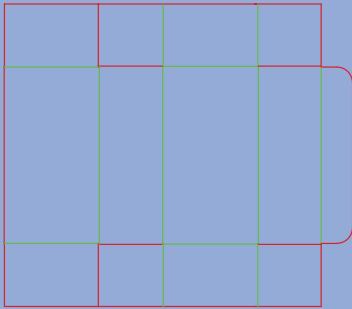
0400 Folder-type Boxes&Trays\
Self Locking Tray with Interior Bottom Flaps



04400400 Folder-type Boxes&Trays\
Tray with Stitched Lid**0441**0400 Folder-type Boxes&Trays\
Tray with Hinged Lid**0442**0400 Folder-type Boxes&Trays\
Tray with Notch Lock Corners and Hinged Cover

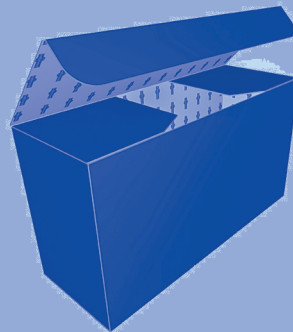
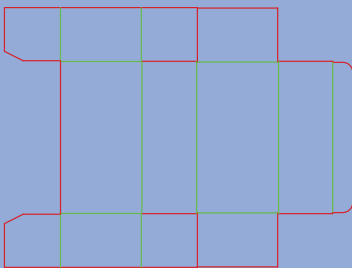
0443

0400 Folder-type Boxes&Trays\
Rigid Tray



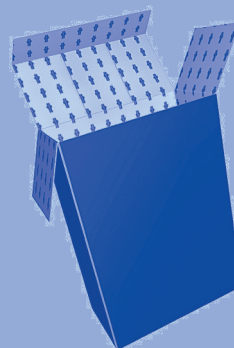
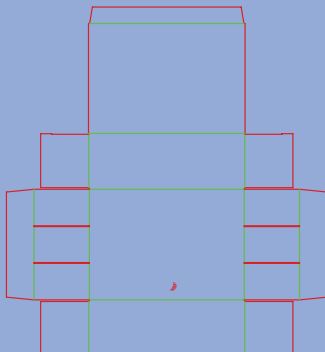
0444

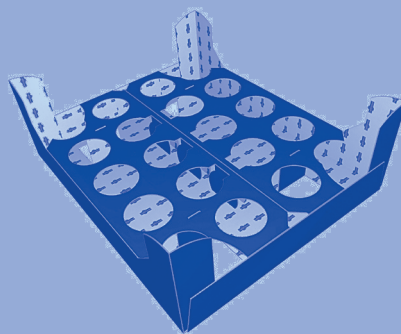
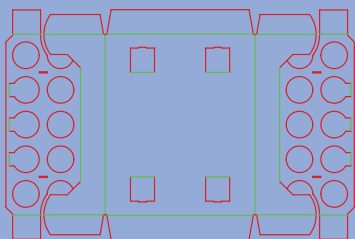
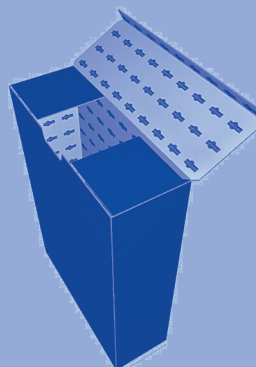
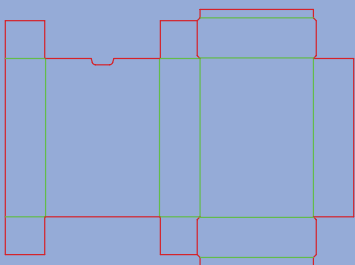
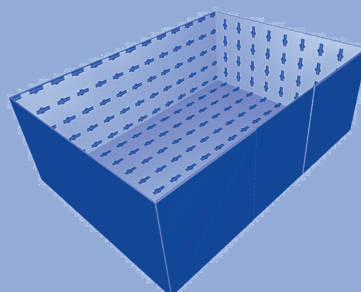
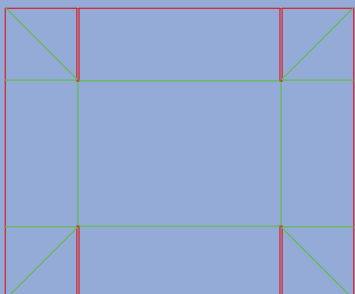
0400 Folder-type Boxes&Trays\
Rigid Tray



0445

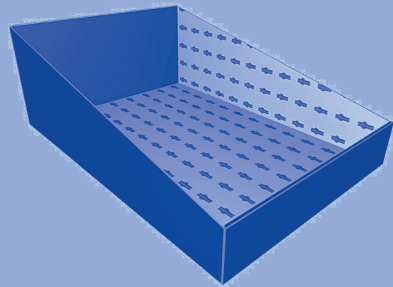
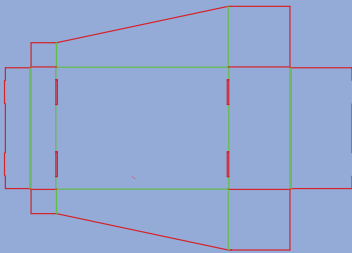
0400 Folder-type Boxes&Trays\
Jointless Tray

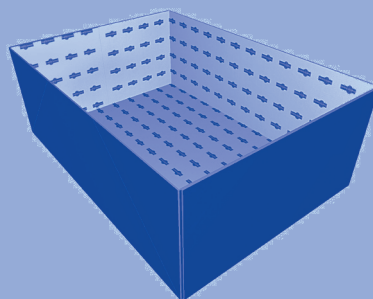
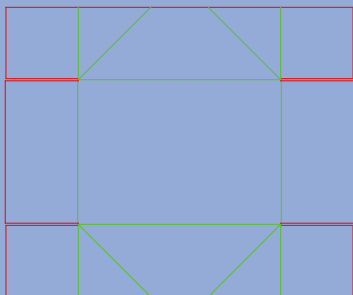
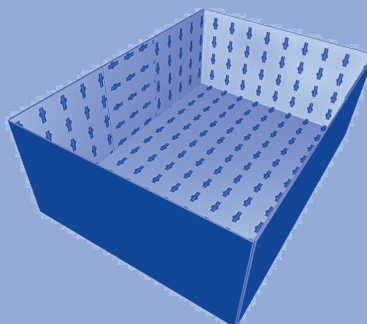
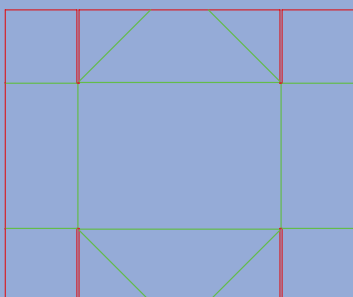
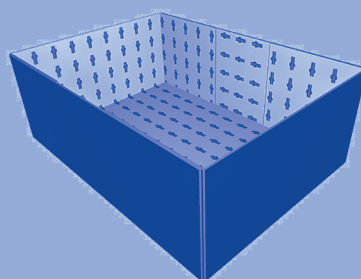
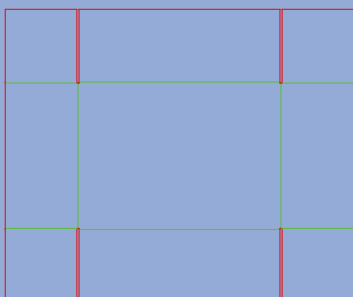


04460400 Folder-type Boxes&Trays\
Tray with Twenty Holders**0447**0400 Folder-type Boxes&Trays\
Tuck Lock**0448**0400 Folder-type Boxes&Trays\
Side Slotted Tray with Folding Flaps

0449

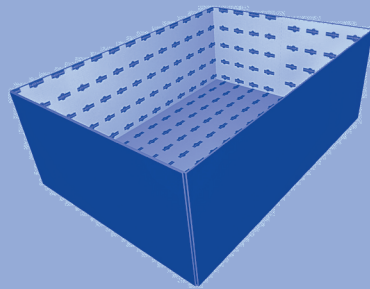
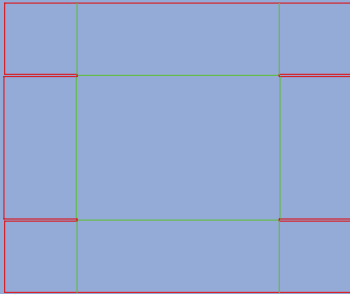
*0400 Folder-type Boxes&Trays\
Display Tray with Self Locking Wall*



04500400 Folder-type Boxes&Trays\
ES Tray with Folding Wall**0451**0400 Folder-type Boxes&Trays\
Side Slotted Tray with Folding Wall**0452**0400 Folder-type Boxes&Trays\
Side Slotted Tray

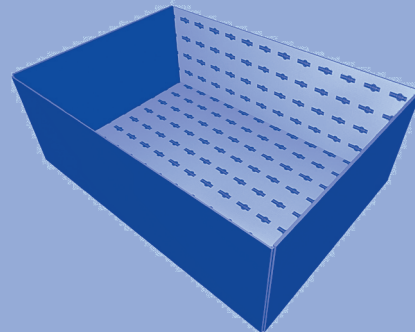
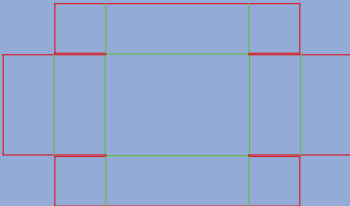
0453

0400 Folder-type Boxes&Trays\
ES Tray



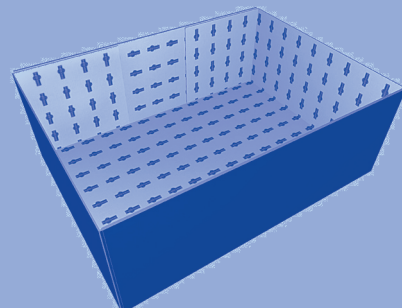
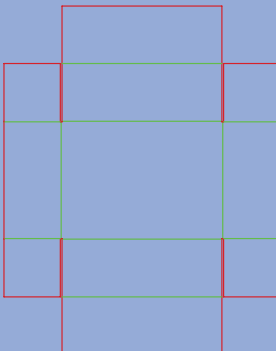
0454

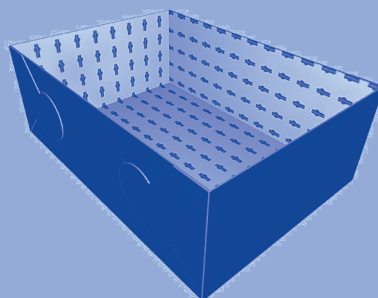
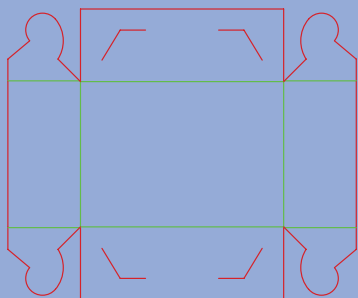
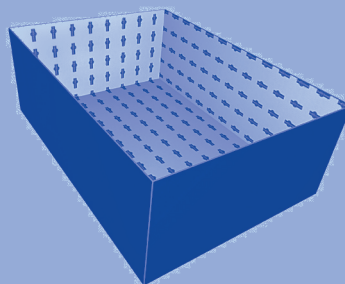
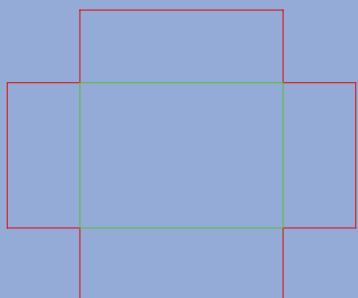
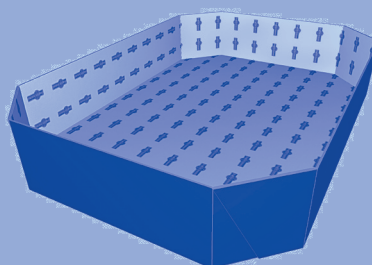
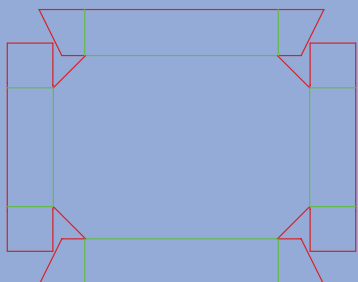
0400 Folder-type Boxes&Trays\
ES Tray with Double Wall



0455

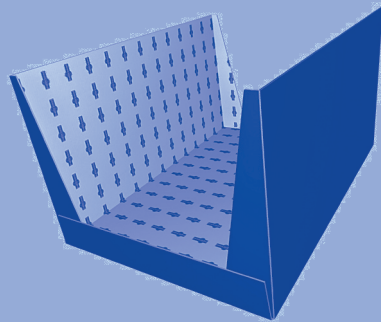
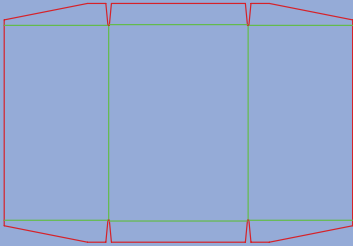
0400 Folder-type Boxes&Trays\
Side Slotted Tray with Double Wall



04570400 Folder-type Boxes&Trays\
Tray with Ear Hook Lock Corners**0458**0400 Folder-type Boxes&Trays\
Container**0459**0400 Folder-type Boxes&Trays\
Octagonal Tray

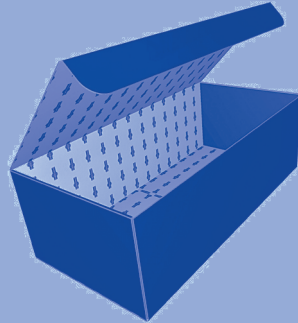
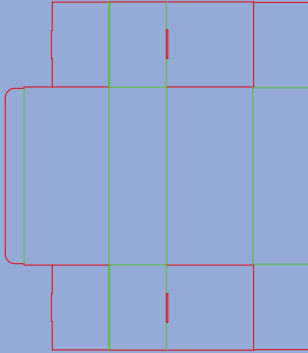
0460

0400 Folder-type Boxes&Trays\
Tray with Raised Panels



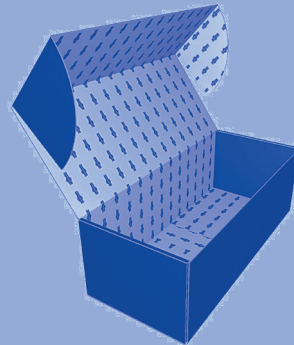
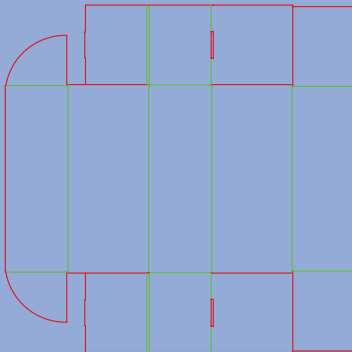
0470

0400 Folder-type Boxes&Trays\
Self Locking Tray with Interior Bottom Flaps



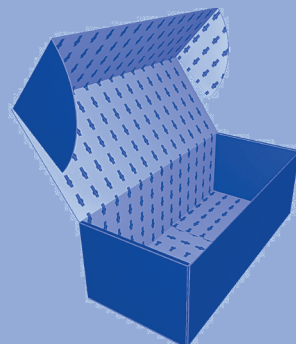
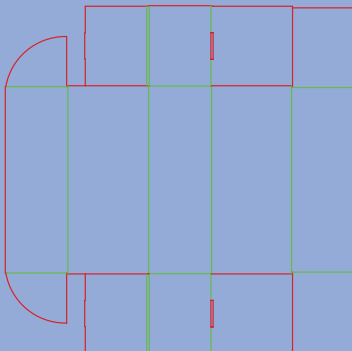
0471

0400 Folder-type Boxes&Trays\
Self Locking Tray with Interior Bottom Flaps



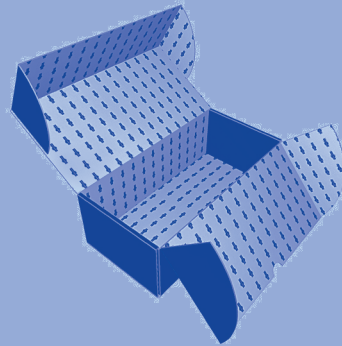
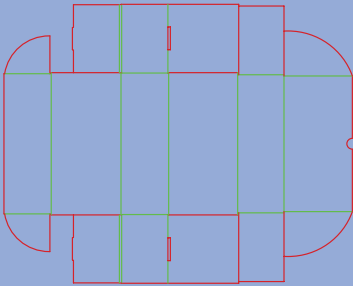
0471a

0400 Folder-type Boxes&Trays\
Self Locking Tray with Interior Bottom Flaps



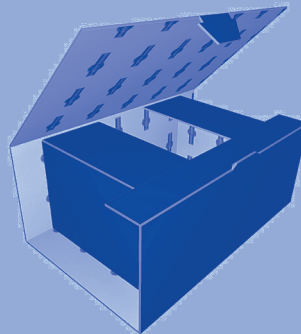
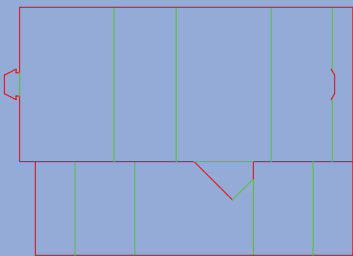
0472

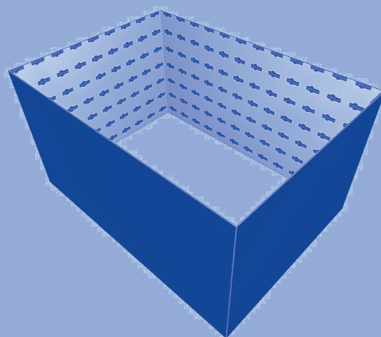
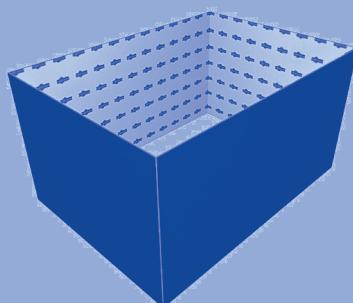
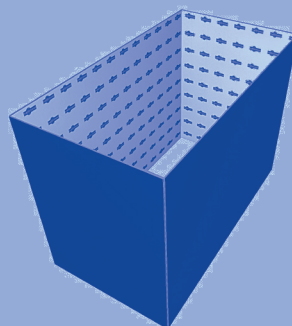
0400 Folder-type Boxes&Trays\
Self Locking Tray with Interior Bottom Flaps



0473

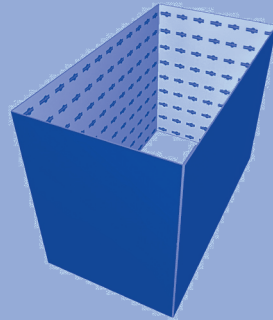
0400 Folder-type Boxes&Trays\
Recessed End Box



0501*0500 Slide-type Boxes*
Slide Type Box (LWH)**0501a***0500 Slide-type Boxes*
Slide Type Box (LWH)**0502***0500 Slide-type Boxes*
Slide Type Box (LHW)

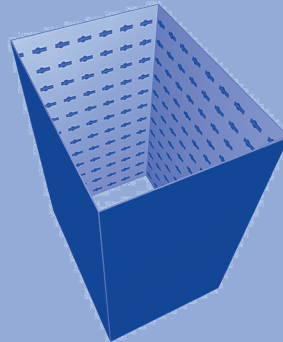
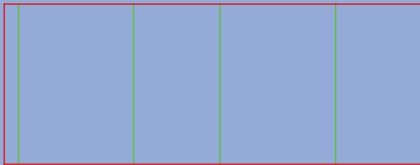
0502a

0500 Slide-type Boxes\
Slide Type Box (LHW)



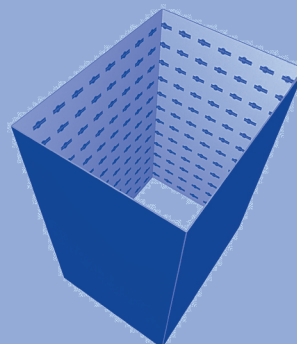
0503

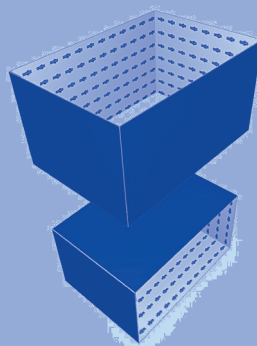
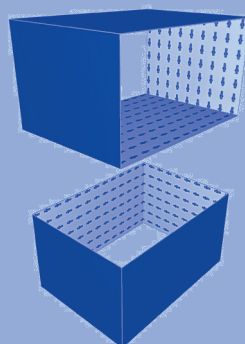
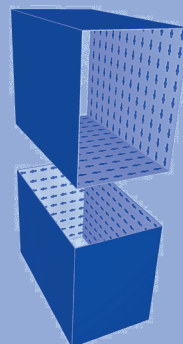
0500 Slide-type Boxes\
Slide Type Box (WHL)



0503a

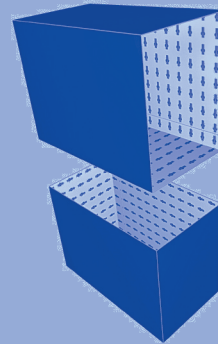
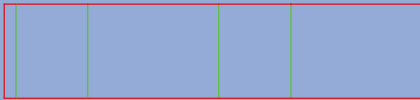
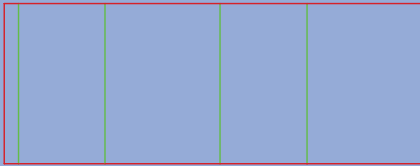
0500 Slide-type Boxes\
Slide Type Box (WHL)



05040500 Slide-type Boxes\
Slide Type Box**0504a**0500 Slide-type Boxes\
Slide Type Box**0505**0500 Slide-type Boxes\
Slide Type Box

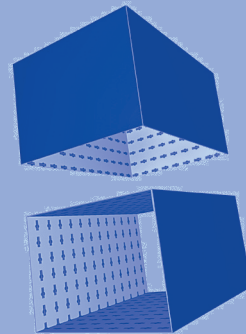
0505a

0500 Slide-type Boxes\
Slide Type Box



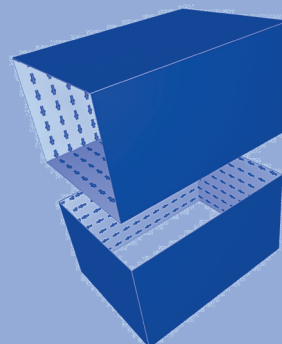
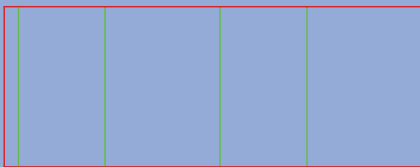
0507

0500 Slide-type Boxes\
Slide Type Box



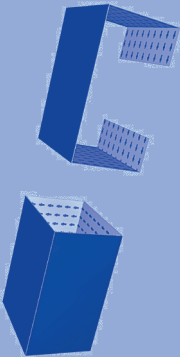
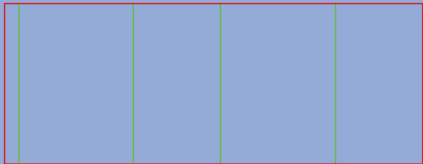
0507a

0500 Slide-type Boxes\
Slide Type Box



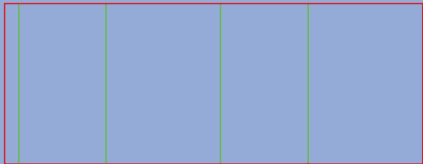
0509

0500 Slide-type Boxes\
Slide Type Box



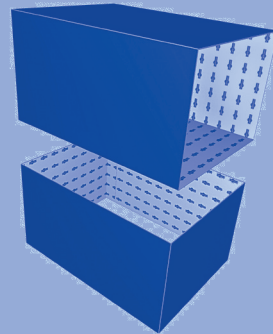
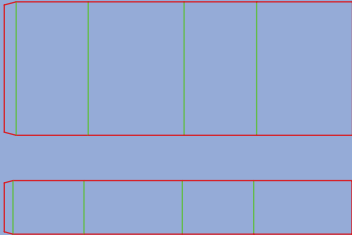
0509a

0500 Slide-type Boxes\
Slide Type Box



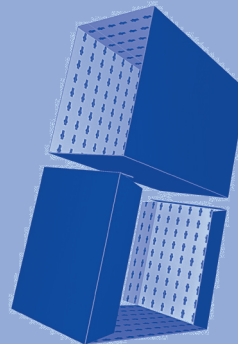
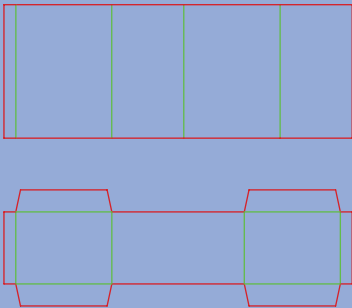
0510

0500 Slide-type Boxes\
Slide Type Box



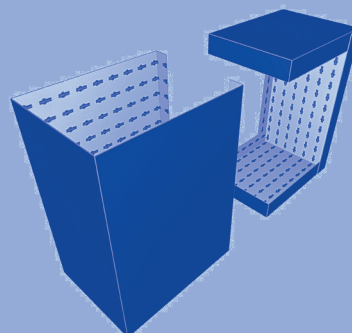
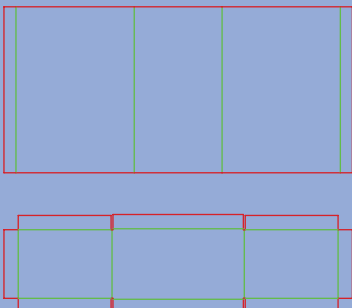
0511

0500 Slide-type Boxes\
Two Piece Container



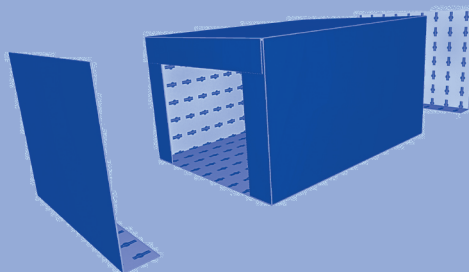
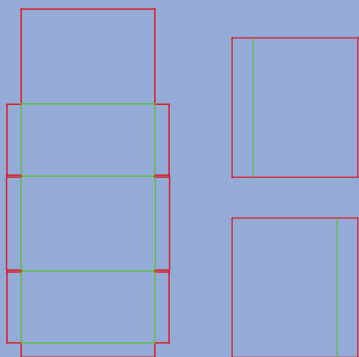
0512

0500 Slide-type Boxes\
Two Piece Slotted Container

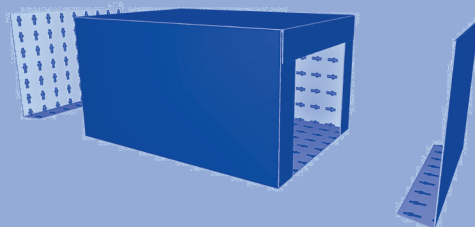
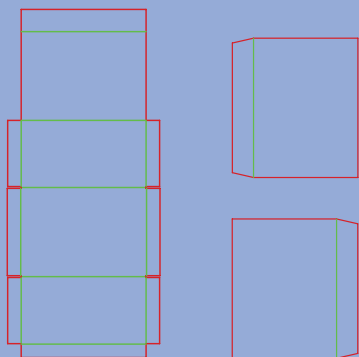


0601

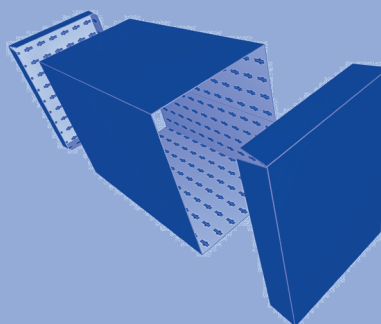
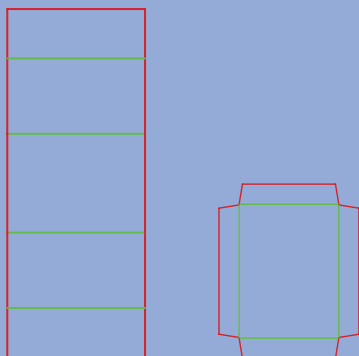
0600 Rigid-type Boxes\
Bliss Style Container with End Flaps

**0602**

0600 Rigid-type Boxes\
Bliss Style Container with End Panel Legs

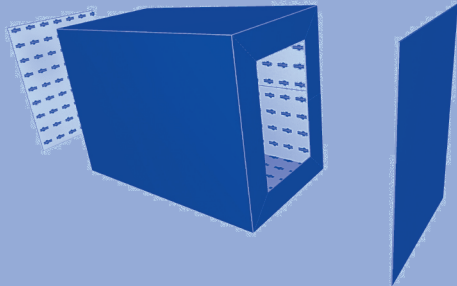
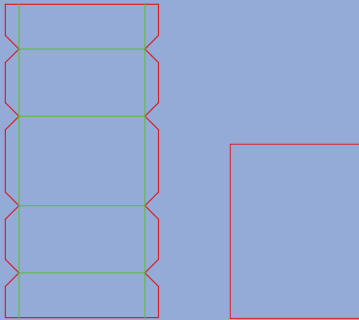
**0605**

0600 Rigid-type Boxes\
Bliss Style Container



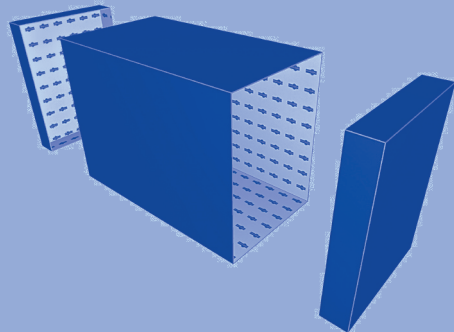
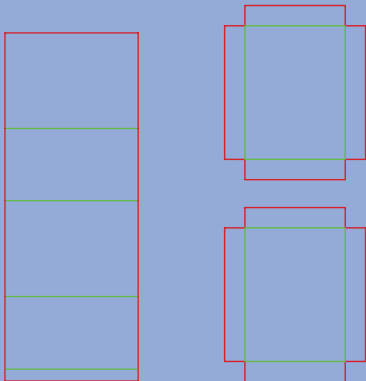
0606

0600 Rigid-type Boxes\
Bliss Style Container



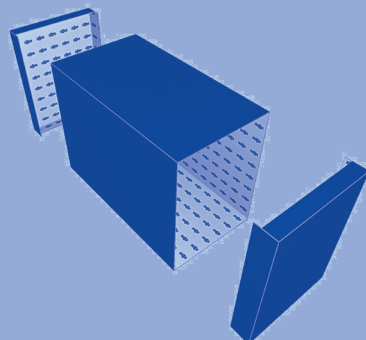
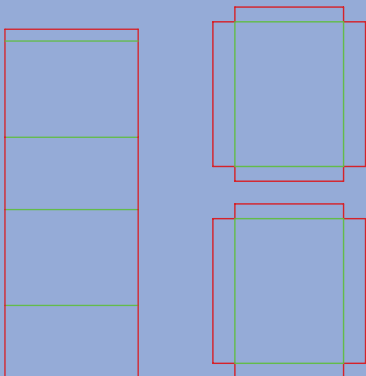
0607

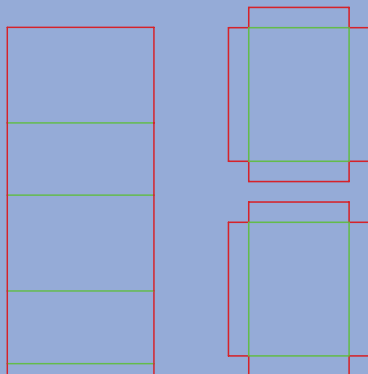
0600 Rigid-type Boxes\
Bliss Style Container with End Flaps



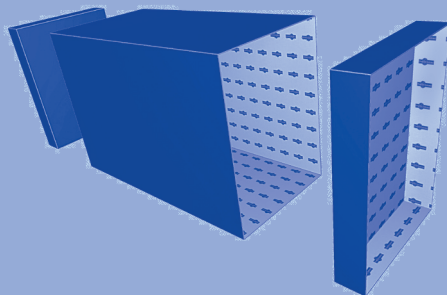
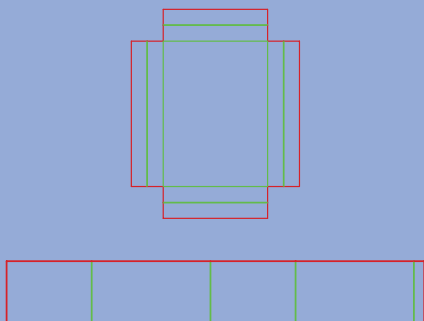
0608

0600 Rigid-type Boxes\
Bliss Style Container

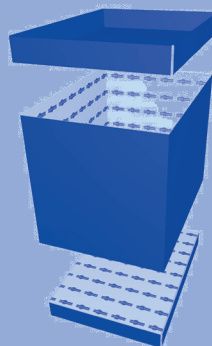
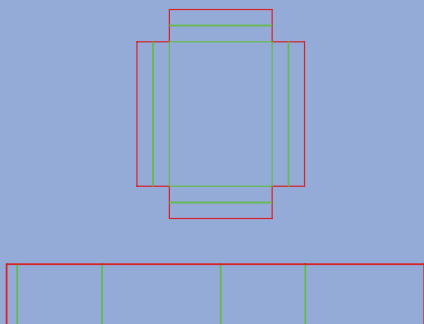


0610

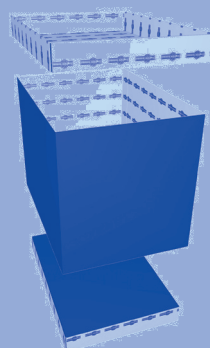
0600 Rigid-type Boxes\
Bliss Style Container with End Flaps

**0615**

0600 Rigid-type Boxes\
Bliss Style Container with Double Crease Flaps

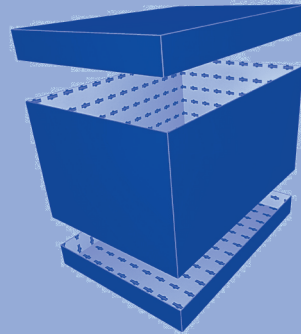
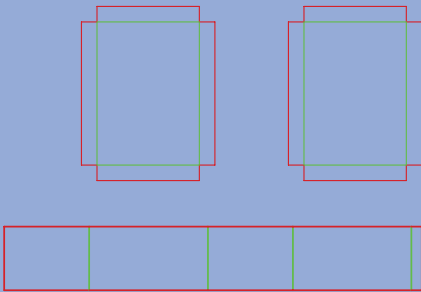
**0615a**

0600 Rigid-type Boxes\
Bliss Style Container with Double Crease Flaps



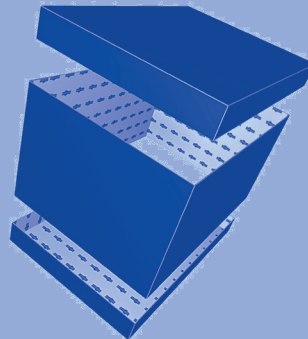
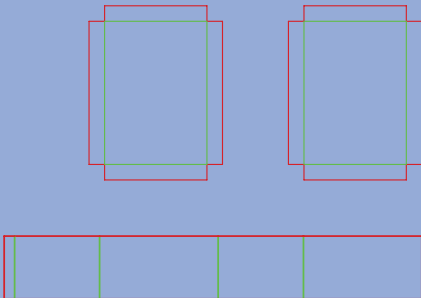
0616

0600 Rigid-type Boxes\
Bliss Style Container with End Flaps



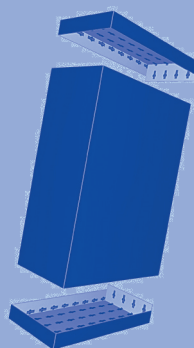
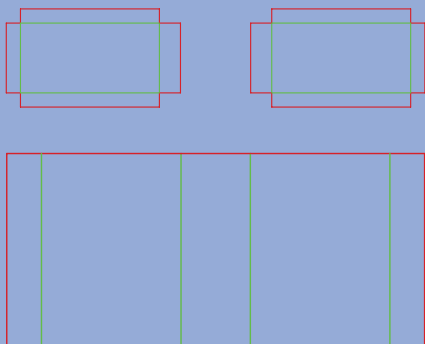
0616a

0600 Rigid-type Boxes\
Bliss Style Container with End Flaps



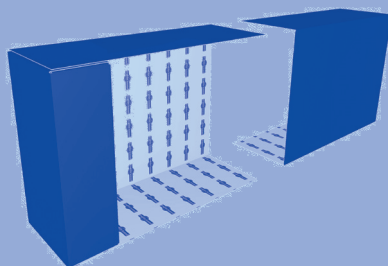
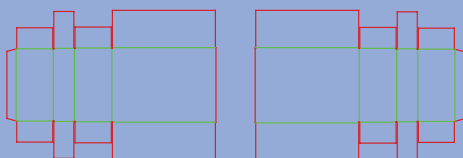
0620

0600 Rigid-type Boxes\
Bliss Style Container with End Flaps



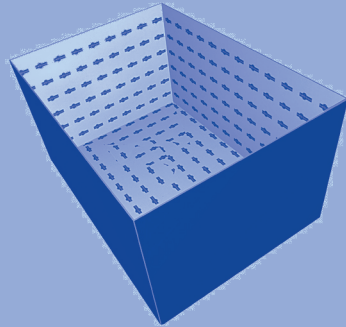
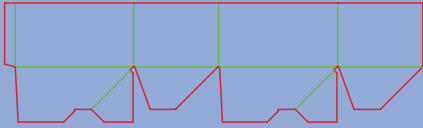
0621

0600 Rigid-type Boxes\
Bliss Style Container with Air Cell



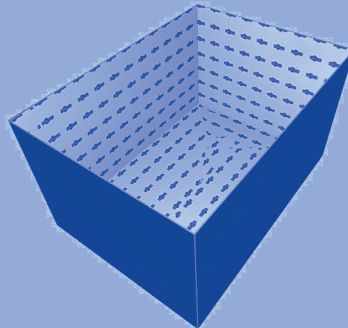
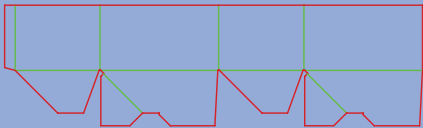
0700

0700 Self-erecting Boxes&Trays\
Open Top - Crash Lock



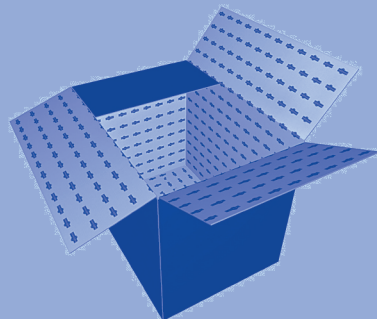
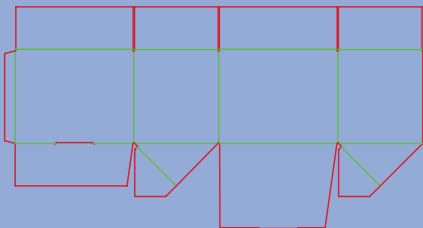
0700a

0700 Self-erecting Boxes&Trays\
Open Top - Crash Lock



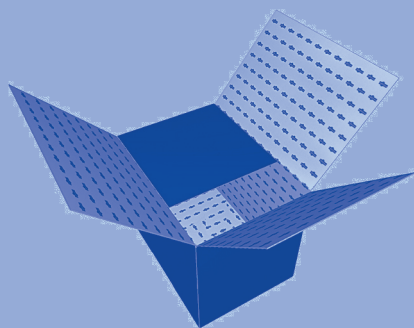
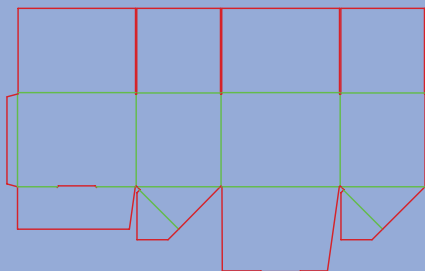
0701

0700 Self-erecting Boxes&Trays\
Regular Slotted Top - Crash Lock



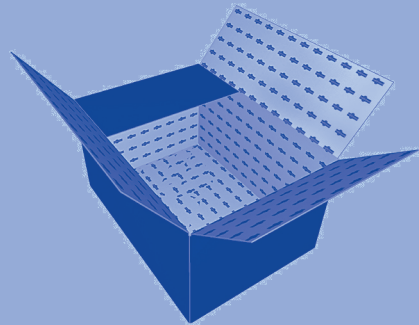
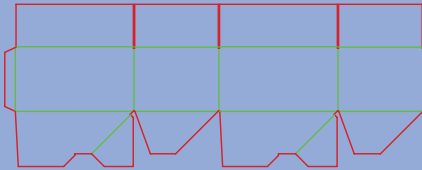
0703

*0700 Self-erecting Boxes&Trays\
Full Overlap Slotted Top - Crash Lock*



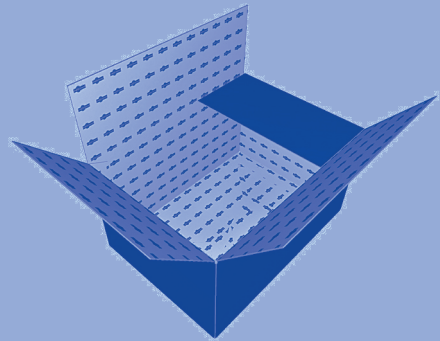
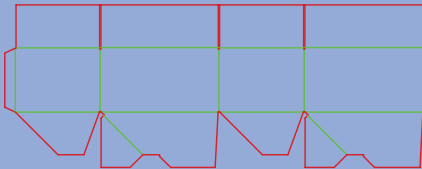
0711

0700 Self-erecting Boxes&Trays\
Regular Slotted Top - Crash Lock



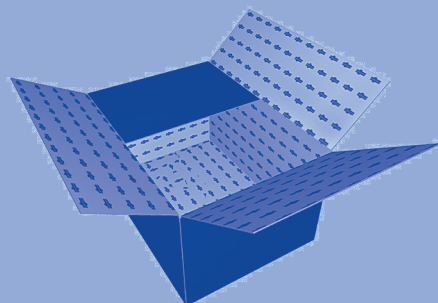
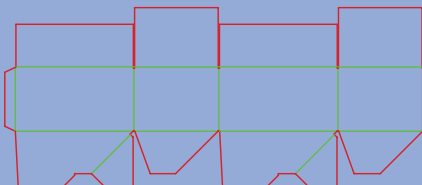
0711a

0700 Self-erecting Boxes&Trays\
Regular Slotted Top - Crash Lock



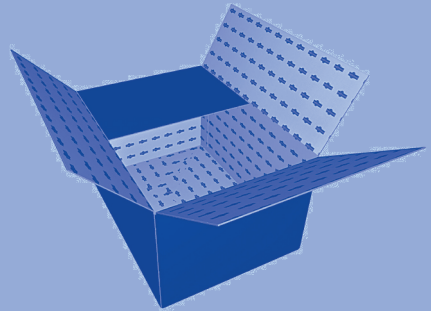
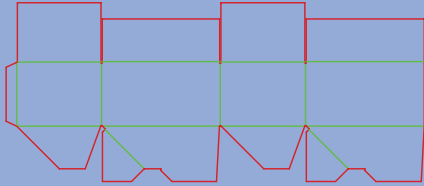
0712

0700 Self-erecting Boxes&Trays\
Center Special Slotted Top - Crash Lock



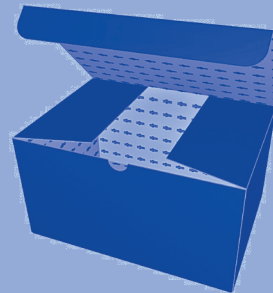
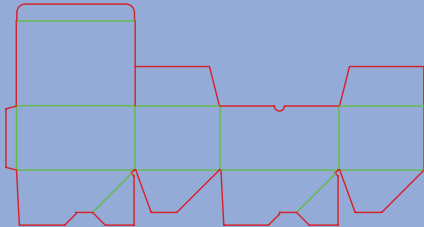
0712a

0700 Self-erecting Boxes&Trays\
Center Special Slotted Top - Crash Lock



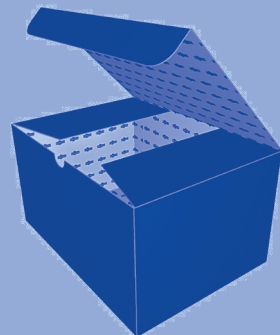
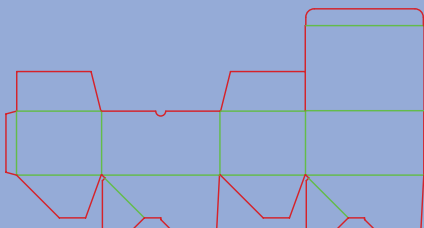
0713

0700 Self-erecting Boxes&Trays\
Friction Tuck - Crash Lock



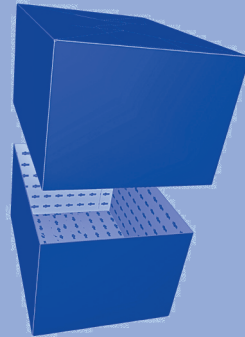
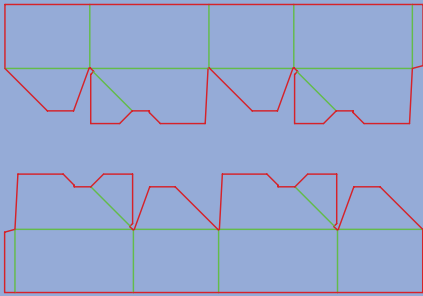
0713a

0700 Self-erecting Boxes&Trays\
Friction Tuck - Crash Lock



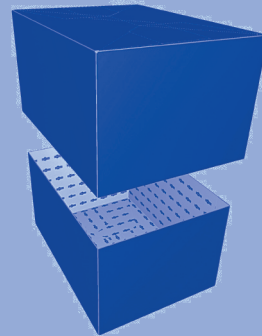
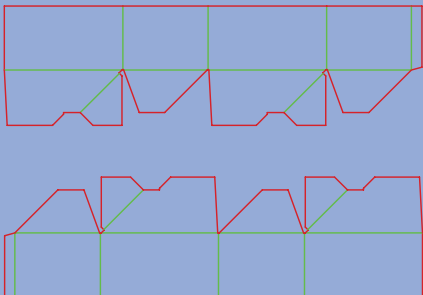
0714

0700 Self-erecting Boxes&Trays\
Full Telescope Crash Lock Container



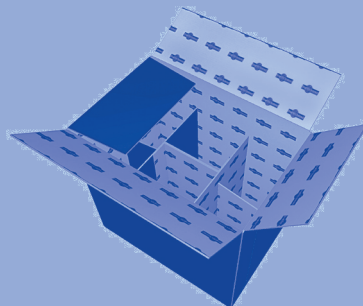
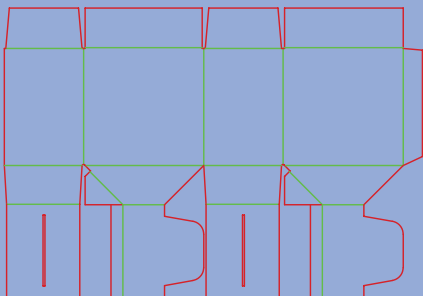
0714a

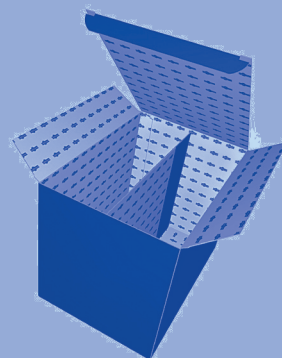
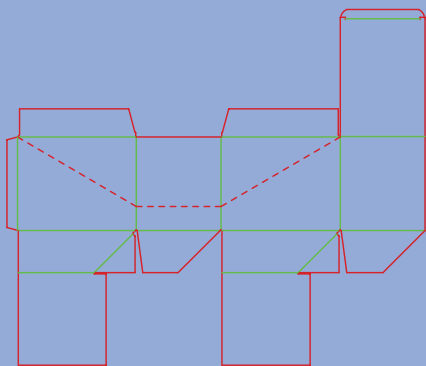
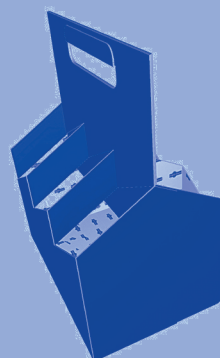
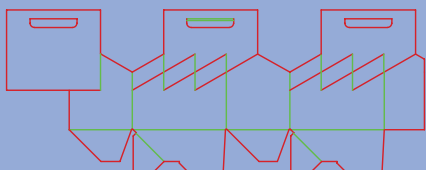
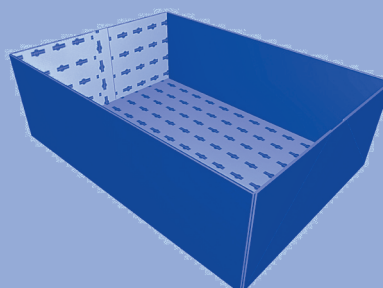
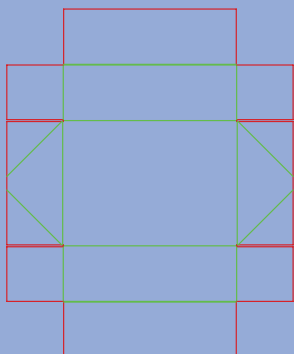
0700 Self-erecting Boxes&Trays\
Full Telescope Crash Lock Container



0715

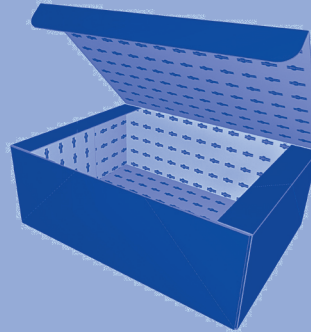
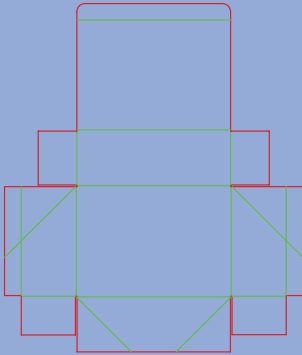
0700 Self-erecting Boxes&Trays\
Six Cell Container with Regular Top



07160700 Self-erecting Boxes&Trays\
Two Cell Box Display**0717**0700 Self-erecting Boxes&Trays\
Six Pack Bottle Carrier**0718**0700 Self-erecting Boxes&Trays\
Collapsible Tray with Folding Wall and Double Wall

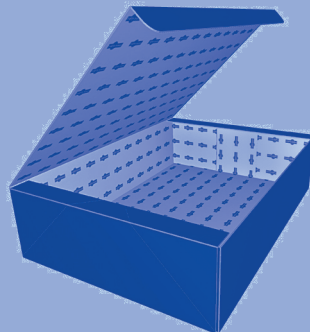
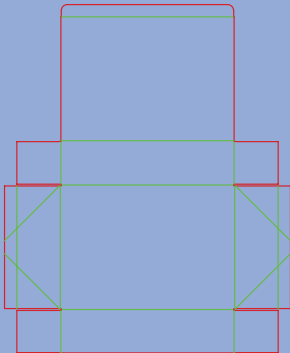
0747

0700 Self-erecting Boxes&Trays\
Collapsible Tray with Dust Flaps and Hinged Lid



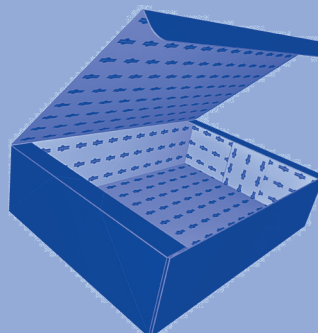
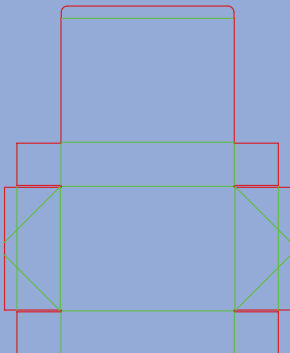
0748

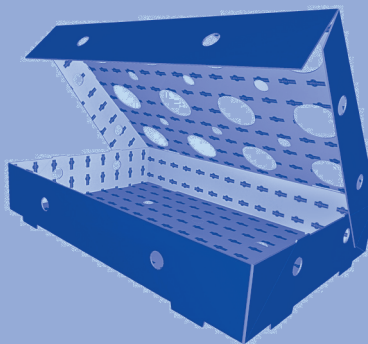
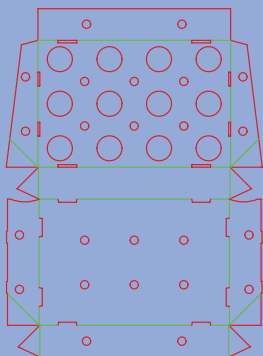
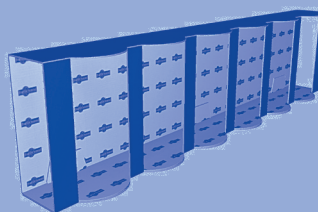
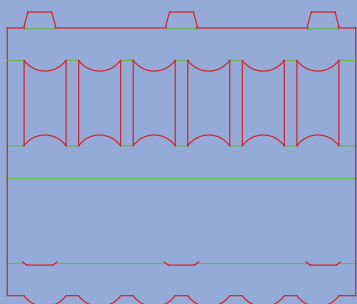
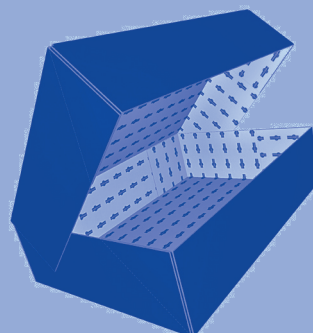
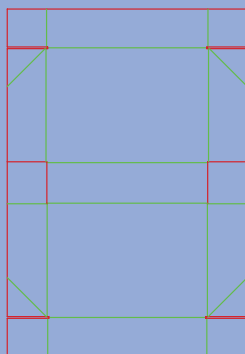
0700 Self-erecting Boxes&Trays\
Collapsible Tray with Dust Flaps and Hinged Lid



0748a

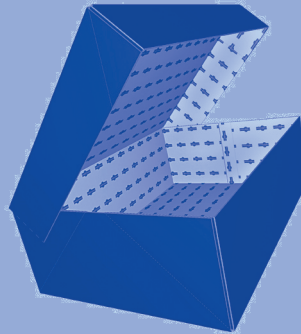
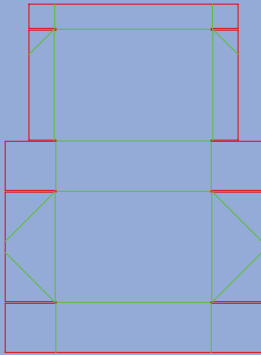
0700 Self-erecting Boxes&Trays\
Collapsible Tray with Dust Flaps and Hinged Lid



07510700 Self-erecting Boxes&Trays\
Twelve Holder Tray**0752**0700 Self-erecting Boxes&Trays\
Six Glass Holder**0759**0700 Self-erecting Boxes&Trays\
Collapsible Tray with Hinged Lid

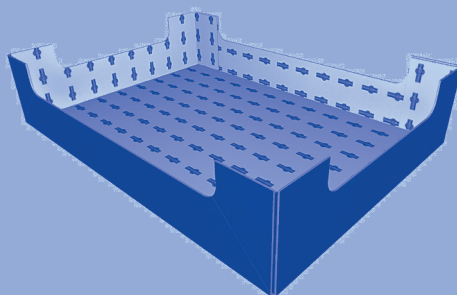
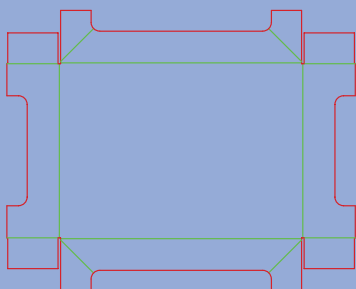
0761

*0700 Self-erecting Boxes&Trays\
Collapsible Tray with Hinged Lid*



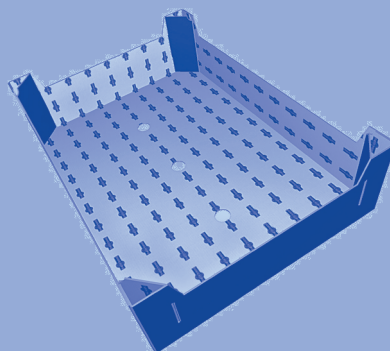
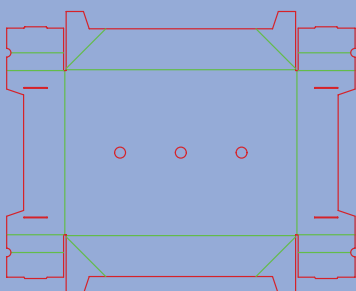
0770

0700 Self-erecting Boxes&Trays\
Collapsible Tray



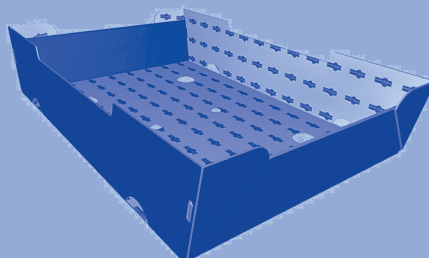
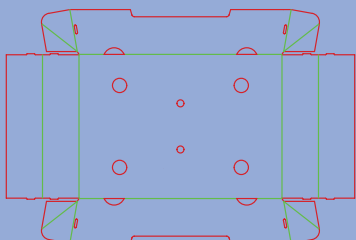
0771

0700 Self-erecting Boxes&Trays\
Collapsible Tray



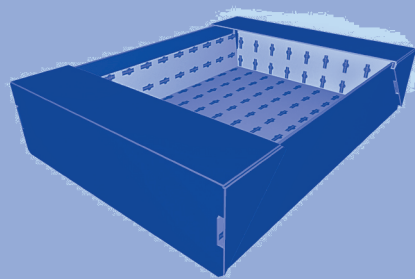
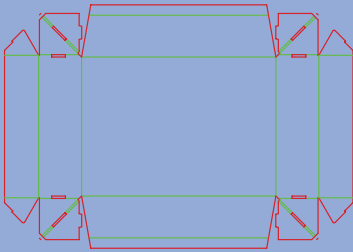
0772

0700 Self-erecting Boxes&Trays\
Tapered Tray



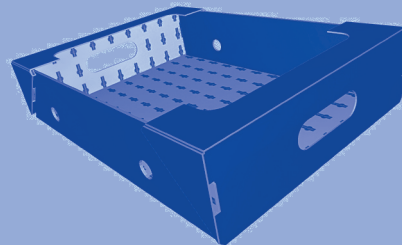
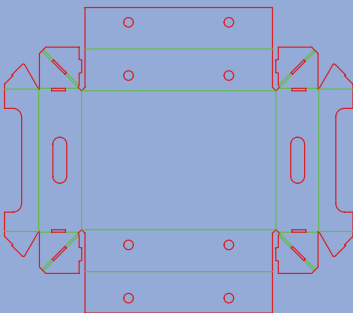
0773

0700 Self-erecting Boxes&Trays\
Ear Hook Lock Tray



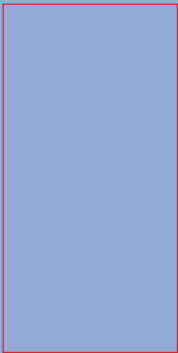
0774

0700 Self-erecting Boxes&Trays\
Ear Hook Lock Tray with Holder



0900

0900 Interior Forms\
Inner Flap Fitting Pad



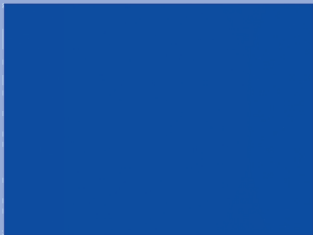
0901

0900 Interior Forms\
Complete Cover Bottom Pad



0902

0900 Interior Forms\
Complete Cover W-Side Pad



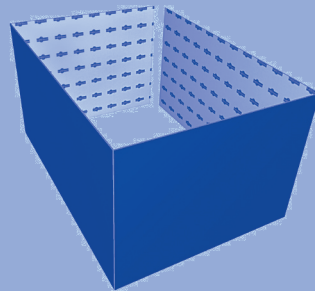
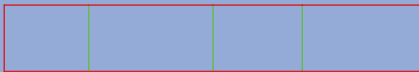
0903

0900 Interior Forms\
Complete Cover L-Side Pad



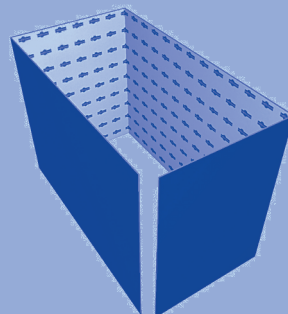
0904

0900 Interior Forms\
Open Liner (LWH)



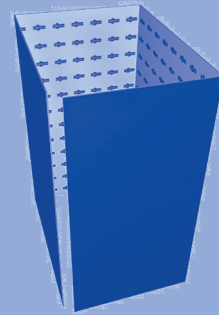
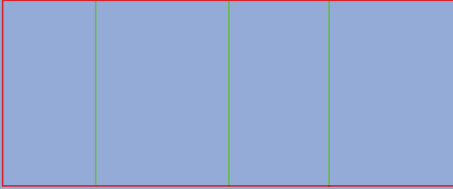
0905

0900 Interior Forms\
Open Liner (HLW)



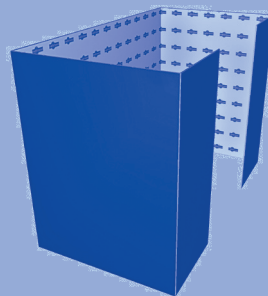
0906

0900 Interior Forms\
Open Liner (HWL)



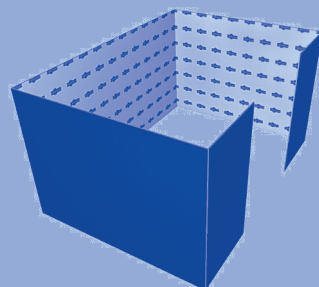
0907

0900 Interior Forms\
Open Liner (HLW)



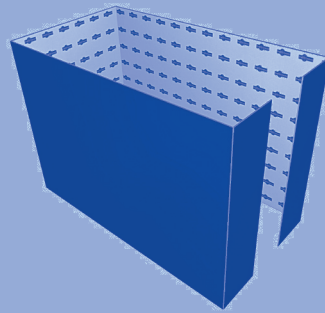
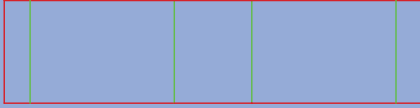
0908

0900 Interior Forms\
Open Liner (LWH)



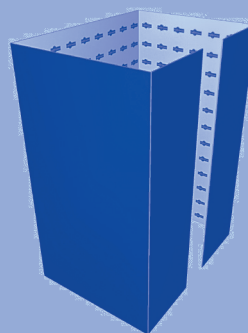
0909

0900 Interior Forms\
Open Liner (LHW)



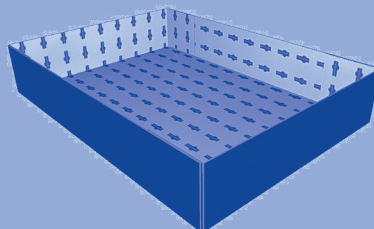
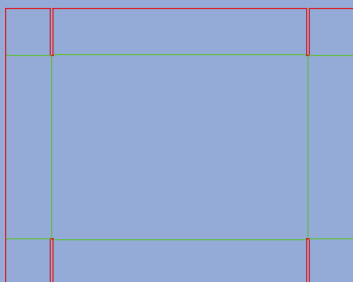
0910

0900 Interior Forms\
Open Liner (HWL)



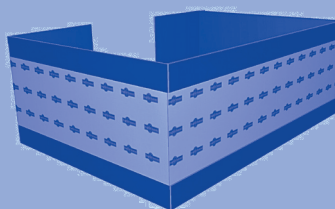
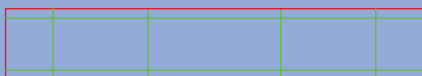
0911

0900 Interior Forms\
Side Slotted Tray



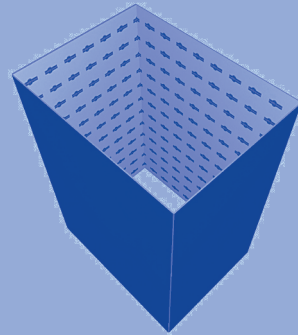
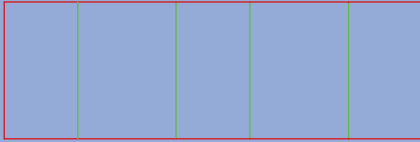
0913

0900 Interior Forms\
Open Liner



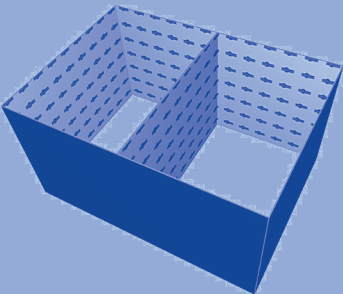
0914

0900 Interior Forms\
Full Overlap Closure Liner



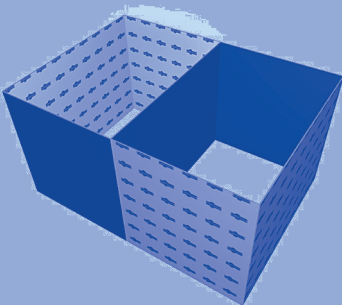
0920

0900 Interior Forms\
Open Compartment Liner



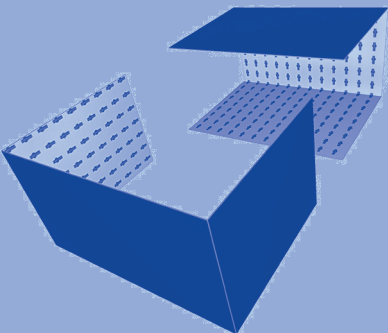
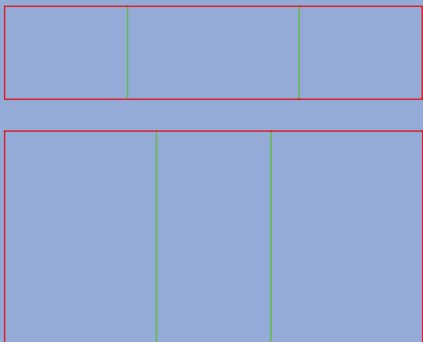
0921

0900 Interior Forms\
Open Compartment Liner



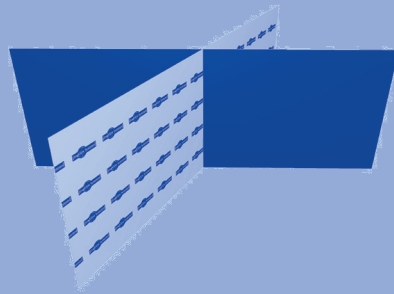
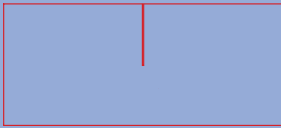
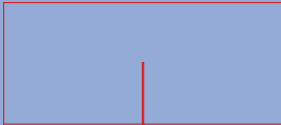
0929

0900 Interior Forms\
C Partition



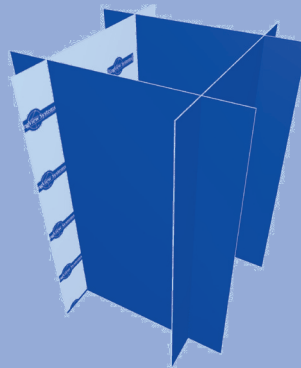
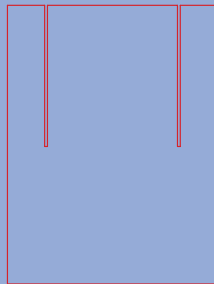
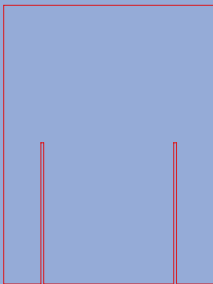
0930

0900 Interior Forms\
Four Cell Partition



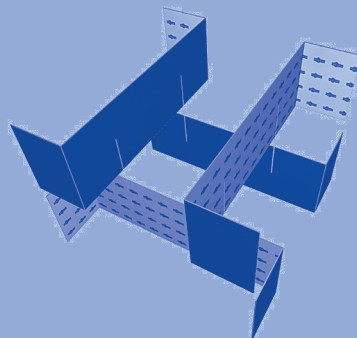
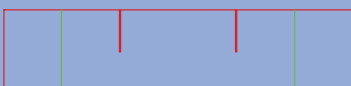
0931

0900 Interior Forms\
Single Cell Extension Partition



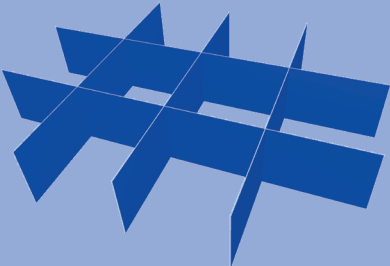
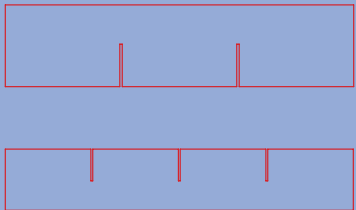
0932

0900 Interior Forms\
Single Cell Support Partition



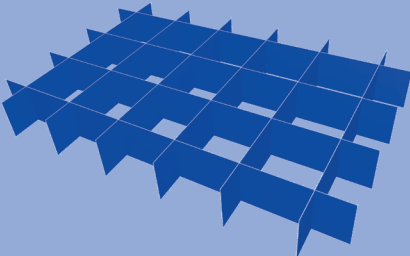
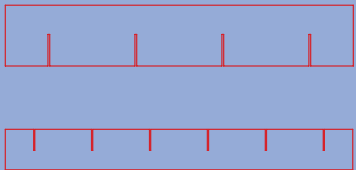
0933

0900 Interior Forms\
Twelve Cell Partition



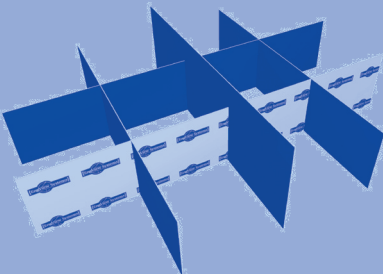
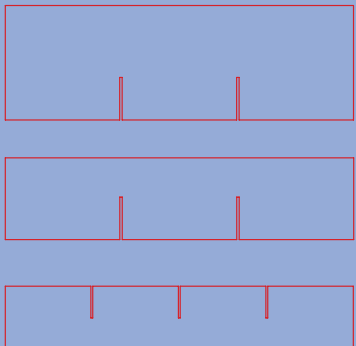
0934

0900 Interior Forms\
Fifteen Cell Extension Partition



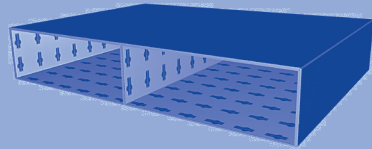
0935

0900 Interior Forms\
Twelve Cell with High Divider



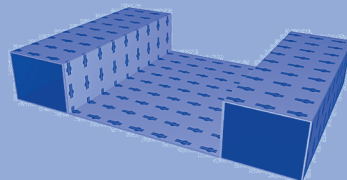
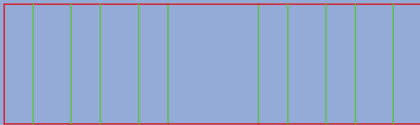
0940

0900 Interior Forms\
Cushion Pad



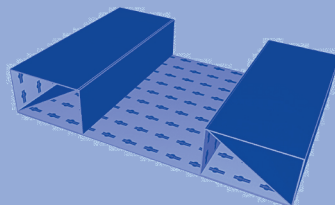
0941

0900 Interior Forms\
Cushion Pad



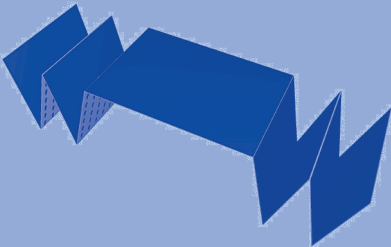
0942

0900 Interior Forms\
Cushion Pad



0943

0900 Interior Forms\
Clearance Pad



0944

0900 Interior Forms\
Clearance Pad



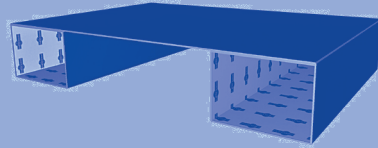
0945

0900 Interior Forms\
Cushion Pad



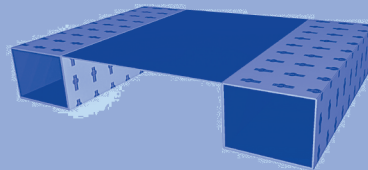
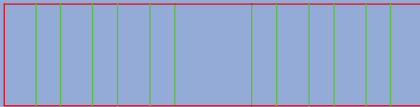
0946

0900 Interior Forms\
Cushion Pad



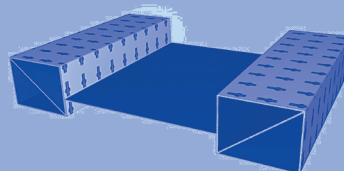
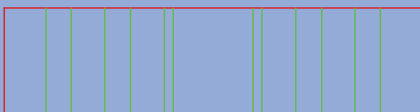
0947

0900 Interior Forms\
Cushion Pad



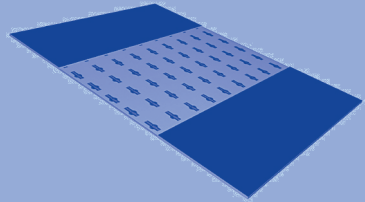
0948

0900 Interior Forms\
Cushion Pad



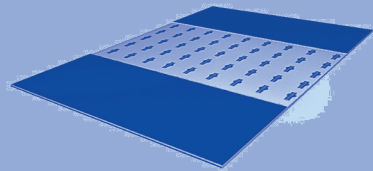
0949

0900 Interior Forms\
Cushion Pad



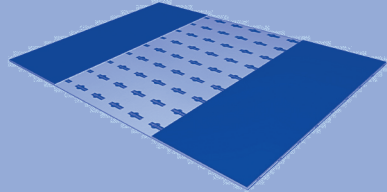
0949a

0900 Interior Forms\
Cushion Pad



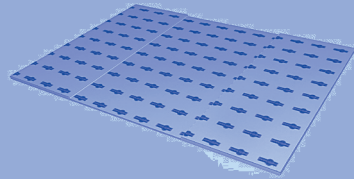
0950

0900 Interior Forms\
Cushion Pad



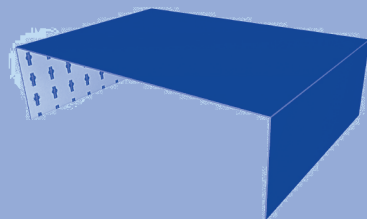
0950a

0900 Interior Forms\
Cushion Pad



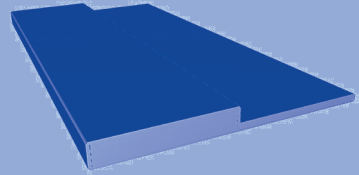
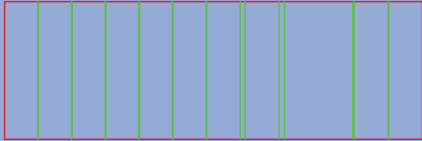
0951

0900 Interior Forms\
Scored Sheet



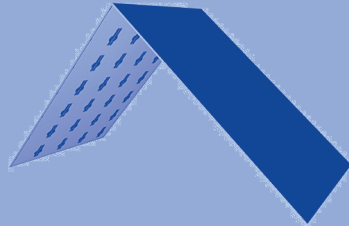
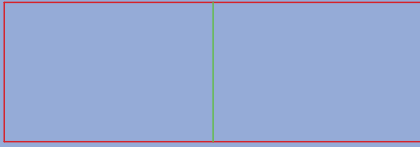
0967

0900 Interior Forms\
Scored Sheet



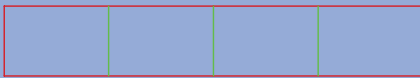
0970

0900 Interior Forms\
Corner Protector



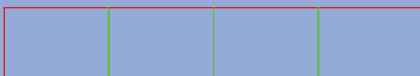
0971

0900 Interior Forms\
Corner Protector



0971a

0900 Interior Forms\
Corner Protector



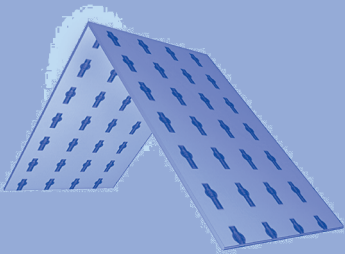
0972

0900 Interior Forms\
Corner Protector



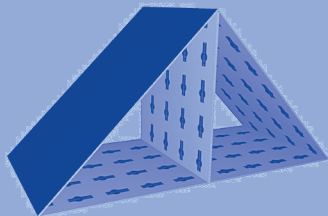
0972a

0900 Interior Forms\
Corner Protector



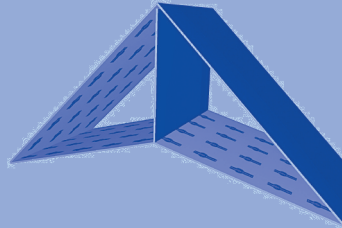
0973

0900 Interior Forms\
Corner Brace Pad



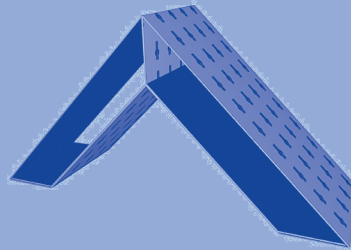
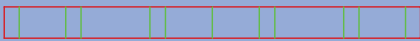
0974

0900 Interior Forms\
Corner Brace Pad



0975

0900 Interior Forms\
Corner Brace Pad



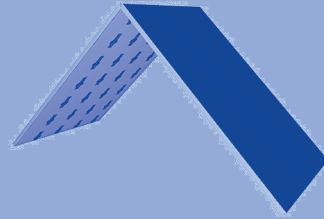
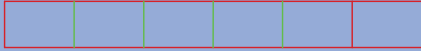
0976

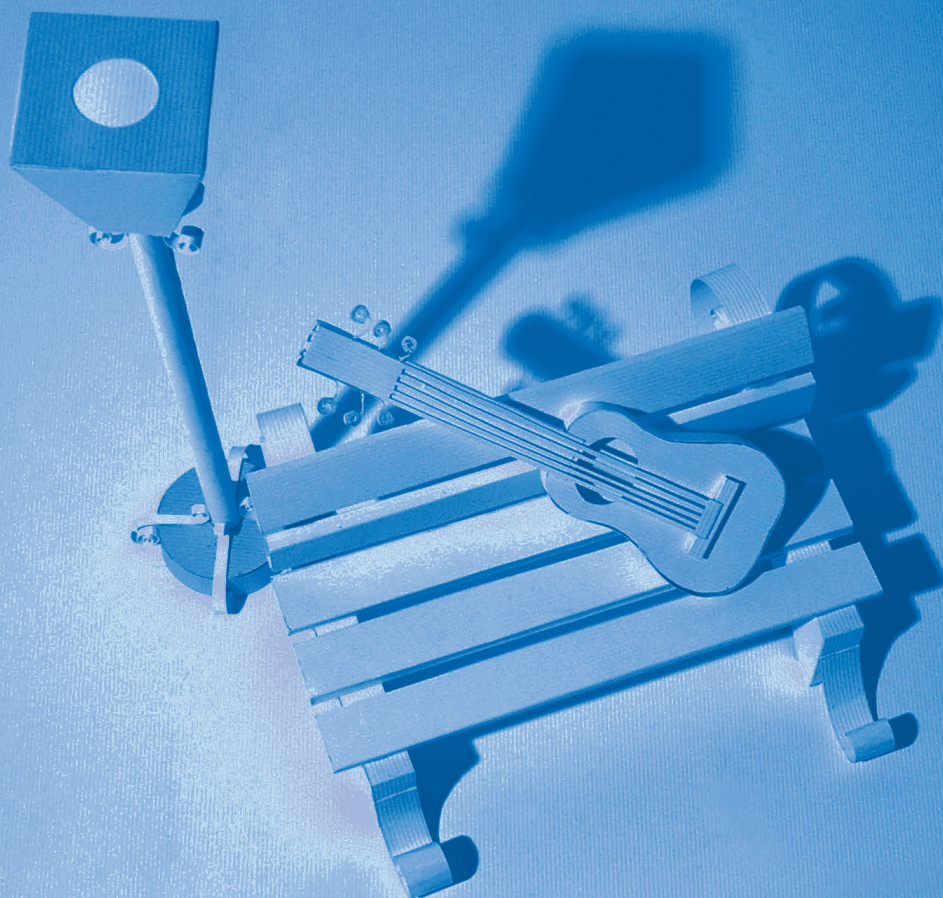
0900 Interior Forms\
Corner Protector



0976a

0900 Interior Forms\
Corner Protector





Contacts

EngView Systems Sofia JSC

135 Tzarigradsko Shosse Blvd.
5th Floor
1784 Sofia, Bulgaria

Tel: +359-2-9768 312
Fax: +359-2-9768 314

e-mail: info@engview.com

EngView Systems Corp.

5890 Monkland Ave., Suite 203
Montreal, Qc
Canada H4A 1G2

Tel: +1-514-343 0290
Fax: +1-514-343 0143

e-mail: info@engview.com

EngView Latin America Ltda.

Rua Joao Azevedo Marques, 215 sl.13
09750-030 Sao Bernardo do Campo
SP, Brazil

Tel.: +55 (11) 2564-7325

e-mail: thais.bardal@engview.com

www.engview.com